

## **Historic, archived document**

Do not assume content reflects current scientific knowledge, policies, or practices.



2.61

LIBRARY  
RECEIVED  
★ MAY 24 1940 ★  
U. S. Department of Agriculture

# AITKEN'S SEEDS

**Selected**

## 1940

**Tested**



AITKEN'S SNOWBALL CAULIFLOWER

**CHAS. R. AITKEN**  
**DELHI, N. Y.**



---

## **To Our Friends and Customers:**

Another year has passed and the new season brings forth our 1940 catalogue. Look over our list of specials. The varieties marked (A) are recommended varieties, strains that the markets want and are paying premium prices for. This we know to be a fact through the experience in growing all varieties here on our farm.

We have only one quality of seed—the best that can be obtained. Our business has been built up on honesty and fair dealings and we cordially thank our many friends and customers for the wonderful increase in business with which they have favored us, and we hope we may continue to serve you the coming season.

Yours sincerely,

Chas. R. Aitken.

---

NOTE: On all orders received before April 1st, we include trial packets of different kinds of seed, the number of packets depending on the amount of your order. Should you find any of these of particular value we would be pleased to hear of it.

Should you have already order and cannot use this catalogue, kindly pass it on to someone who may be interested. Thank you.

---

## **Terms, Ordering and Shipping**

Our regular terms are cash with order. Money may be sent by P. O. money order, bank draft or registered letter, unless terms are agreed upon.

Orders may be sent at any time and seed will be shipped at the time specified on your order.

Orders shipped C. O. D., 25 per cent of the value of your order must accompany order.

## **Delivery of Seeds**

We pay the postage on all seeds sold by the Pkt., Oz.,  $\frac{1}{4}$  lb., and 1 lb. Quantities over that are priced net, to be shipped by parcel post, freight or express, at purchaser's expense, unless otherwise stated.

No charge is made for packing or packages.

## **Conditions of Sale**

All seed sold by us is tested and is of good vitality and will grow under normal conditions. The percentage that germinates is marked on the package, thus giving you the idea just how thick to sow the seed to give a good stand of plants. However, in common with all responsible seedsmen, while we exercise the greatest care in selecting our strains of seed, we do not give any warranty, expressed or implied. We will not be responsible for the crop in any way.

Prices subject to change without notice.

CHARLES R. AITKEN,  
DELHI, N. Y.

---



## Two Complete Seed Collections

### Special Seed Collection

#### No. 1

A \$2.00 Vegetable Seed Collection  
for \$1.00

This collection cannot be changed as it is put up ready to mail before the busy season.

Seeds are of the best, and varieties that are shown in this catalog. Should you want additional seeds, order separately from our catalog.

#### FULL SIZED PACKETS

Beet—Early Wonder  
Bean—Bountiful  
Bean—Sure Crop Wax  
Bean (Lima)—Fordhook Bush  
Cabbage—Green Acre  
Cauliflower—Danish White Rock  
Carrot—Chantenay  
Cucumber—Aitken's Special  
Sweet Corn—Early Golden Market  
Sweet Corn—Whipple's Yellow  
Lettuce—New York or Wonderful  
Lettuce—Black Seeded Simpson  
Onion—Riverside Sweet Spanish  
Peas—Giant Stride (Late)  
Peas—Laxton's Progress (Early)  
Squash—Giant Summer Straightneck  
Spinach—Viking  
Spinach—New Zealand  
Swiss Chard—Dark Green White Ribbed  
Rutabaga—Golden Neckless

Free with this Special Seed Collection,  
1 Pkt. Mixed Sweet Peas of our own mixing.

When ordering ask for Special Seed Collection No. 1.

### Special Seed Collection

#### No. 2

A \$2.75 Vegetable Seed Collection  
for \$2.00

This collection cannot be changed as it is put up ready to mail before the busy season.

Seeds are of the best and varieties that are shown in our catalog. Should you want additional seeds, order separately from our catalog.

1 lb. Beans—Tender Green  
1 oz. Beets—Early Wonder  
1 oz. Cabbage—Copenhagen Market  
1 pkt. Cauliflower—Aitken's Snowball  
1 lb. Sweet Corn—Early Golden Market  
1 oz. Carrot—Improved Danvers  
1 oz. Cucumber—Longfellow  
1 pkt. Lettuce—Imperial (F)  
1 oz. Onion—Prizetaker  
1 lb. Peas—Laxton's Progress  
1 lb. Peas—Dark Podded Telephone  
1 oz. Radish—French Breakfast  
2 ozs. Spinach—Bloomsdale Long Standing  
1 oz. Squash—Giant Summer Crookneck  
1 oz. Swiss Chard—Fordhook Giant  
1 oz. Rutabaga—American Purple Top

Free with this Special Seed Collection,  
1 Pkt. Mixed Dwarf Nasturtiums of our own mixing.

When ordering ask for Special Seed Collection No. 2.

Westford, Mass.

Sept. 6, 1939

Dear Sir:

I think that I should write you and tell you of the really good results that I had with your seeds this Summer. In spite of the very dry season, we had wonderful large heads of lettuce, nice large snap beans, a nice lot of peas and corn. Believe me, I am going to order my seeds from you next year.

J. CLARENCE BURNE.

All Varieties Are Listed as to Maturity, Giving the Approximate Number of Days to Mature from Seed Planting.

## Beans -- Dwarf Snap Green Pods

### (A) Bountiful

48 Days

Very popular bean for early garden snaps. Plant is vigorous grower and prolific bearer of pods 6 to 7 in. long—straight broad and thick-flat. Stringless, brittle, tender and of fine quality. Pkt., .10; 1 lb., .20; 5 lbs., .90; 10 lbs., \$1.60.

### Tender Green

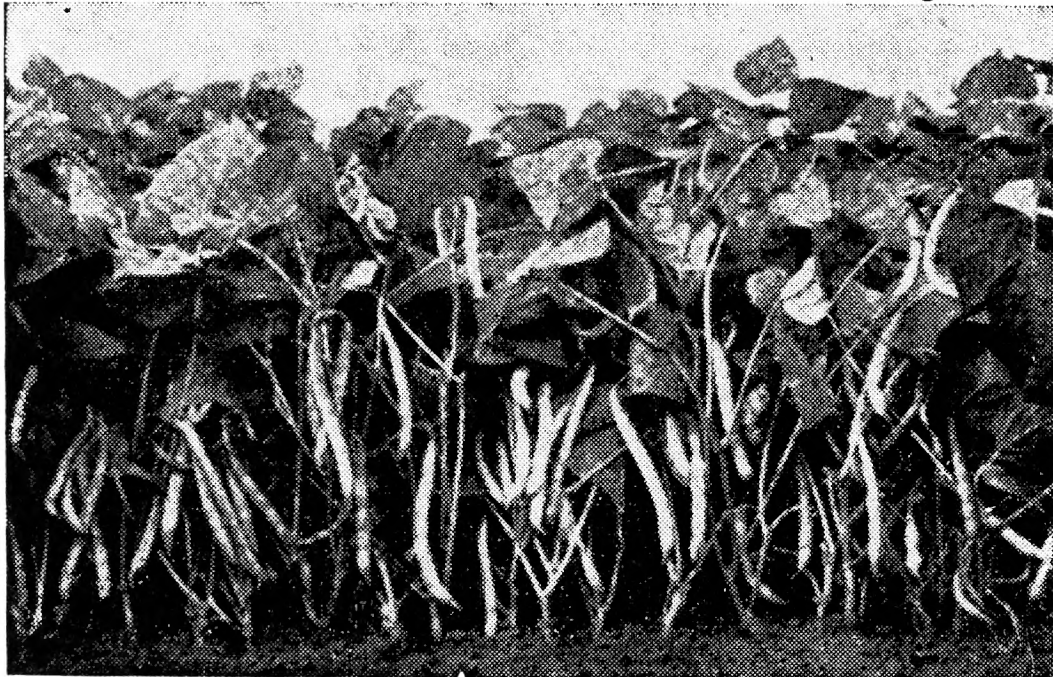
54 Days

A new variety of superior quality. Plants are strong and vigorous, bearing attractive light green pods 7 in. long. Pods are round, meaty, tender, stringless. Plants of upright growth and heavy producers. Pkt., .10; 1 lb., .20; 5 lbs., .90; 10 lbs., \$1.60.

### Black Valentine Stringless

53 Days

A recent valuable introduction for market gardeners and shippers. Plant large, prolific, early. Pods flat, oval, straight, dark green, stringless, of fine quality. Good shipping sort. Pkt., .10; 1 lb., .20; 5 lbs., .90; 10 lbs., \$1.60.



GIANT STRINGLESS GREEN POD

### Giant Stringless Green Pod

54 Days

One of the favorite stringless green podded sorts. An excellent variety for market garden and shipping; also extensively used for canning. Plant large, sturdy, prolific. Pods round, meaty, strictly stringless and brittle; with pods 6 to 6½ in. long. Pkt., .10; 1 lb., .20; 5 lbs., .90; 10 lbs., \$1.60.

## Pole or Running--Green and Wax Pods

### Kentucky Wonder (Old Homestead)

65 Days

This is a very popular variety and unexcelled for home and market garden. Excellent climber, heavy producer. Bears green pods in large clusters, nearly round, often reaching 10 in. in length, curved and twisted. Pods are fleshy, brittle and tender. Pkt., .10; 1 lb., .25; 5 lbs., \$1.15; 10 lbs., \$2.00.

### Horticultural Pole

#### or Speckled Cranberry

Snaps, 70 Days  
Green shell, 80

An old, well known standard sort. Pods 6 in. long, straight, dark green at snap stage, becoming yellowish and splashed with violet-red at green shell stage. Dried beans excellent for winter use. Adapted to cool climate. Pkt., .15; 1 lb., .30; 5 lbs., \$1.40; 10 lbs., \$2.60.

### Kentucky Wonder Wax

67 Days

This prolific bearer supplies large golden yellow pods, tender and stringless right up to frost. A good climber. Pkt., .10; 1 lb., .25; 5 lbs., \$1.15; 10 lbs., \$2.00



## Dwarf Wax Sorts (Yellow Pod)

### (A) Sure Crop Wax

53 Days

An early sort suitable for home and market use. Produces a large sturdy plant. Productive. Pods stringless, flat, rich yellow, 6 to 6½ in. long. Pkt., .10; 1 lb., .25; 5 lbs., \$1.15; 10 lbs., \$2.00.

### Unrivalled Wax

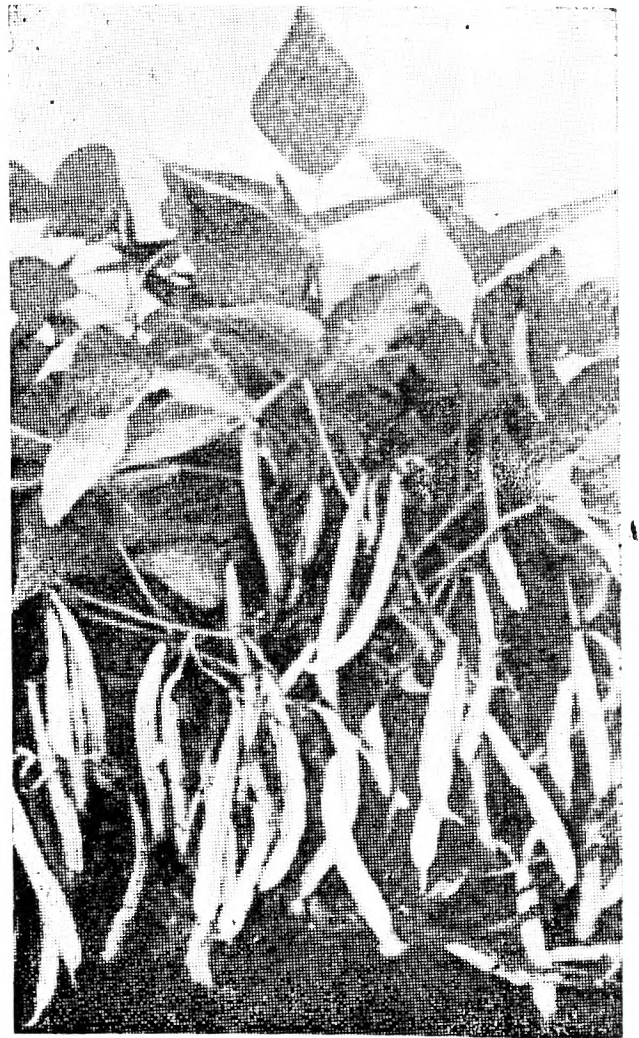
53 Days

Immensely productive. Pods 5 to 5½ in. long, narrow, straight, stringless and fleshy. Disease resistant. Excellent for shipping, making it ideal for market gardeners. Pkt., .15; 1 lb., .30; 5 lbs., \$1.40; 10 lbs., \$2.60.

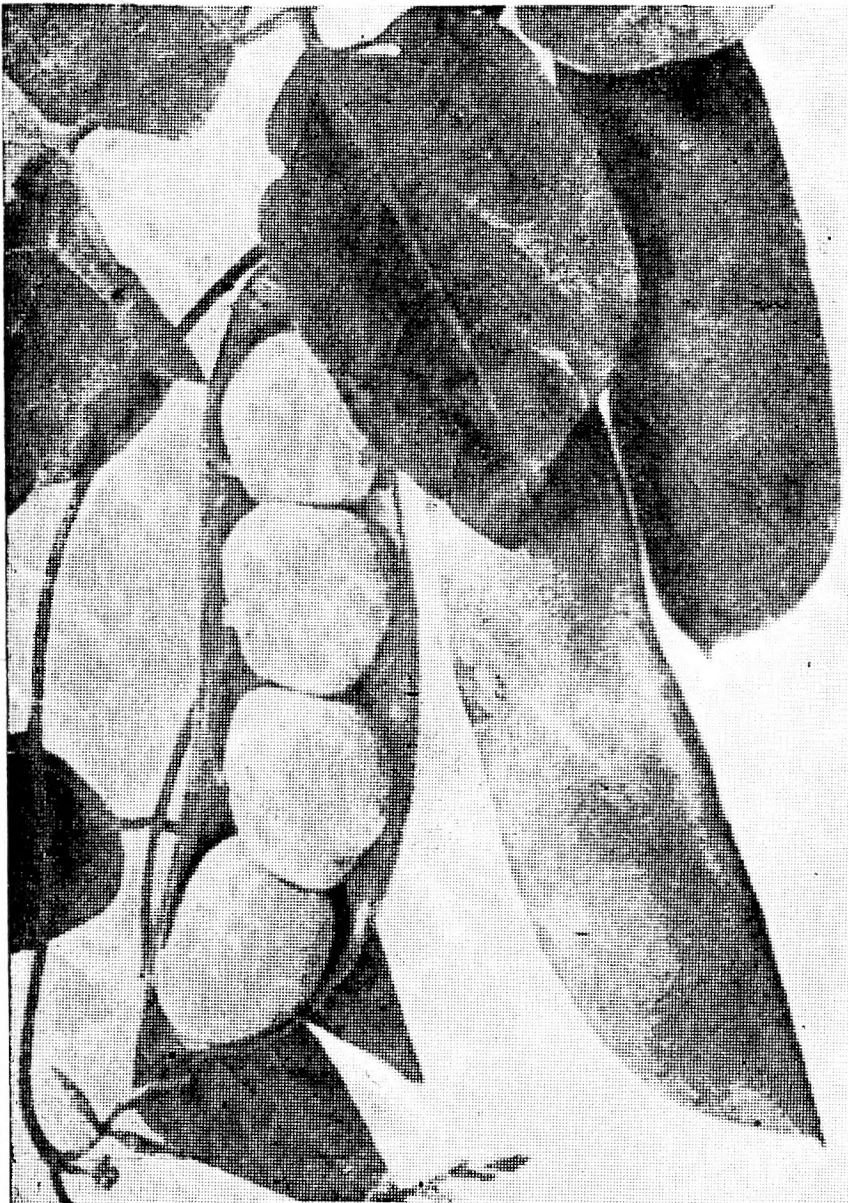
### Pencil Pod Black Wax

58 Days

Bushy plants about 15 in. high, bear large number of round, thick, stringless pods 6 to 7 in. long, of excellent quality. Many think it the best variety for market and home gardens. Pkt., .10; 1 lb., .25; 5 lbs., \$1.15; 10 lbs., \$2.00.



SURE CROP WAX



FORDHOOK BUSH LIMA BEAN

## Dwarf or Bush Lima

### (A) Fordhook Bush

75 Days

Plants strong, erect, bearing pods in clusters of from four to eight. Pods measure 4 to 5½ in. long, and contains three to five large green beans. Pkt., .15; 1 lb., .35; 5 lbs., \$1.35; 10 lbs., \$2.60.



PENCIL POD BLACK WAX

25 lbs. or more of one variety sold at 100 lb. rate. Price on request.

(A) RECOMMENDED VARIETIES



**Burpee's Improved Bush**

76 Days

Produces a magnificent crop of pods 6 in. long and 1 1/4 in. wide. Usually contains four large green beans, fine grained and tasty. Pkt., .15; 1 lb., .35; 5 lbs., \$1.35; 10 lbs., \$2.60.

**Beans -- Pole Lima****Sieva (Carolina)**

78 Days

The small lima known as the pole butter-bean of the South. A very early and prolific producer. Pods 3 1/2 in. long, with 3 or 4 beans. Green shell beans flat and small but of excellent quality. Pkt., .15; 1 lb., .35; 5 lbs., \$1.65; 10 lbs., \$3.30.

**King of the Garden Lima**

88 Days

Splendid climber, heavy producer. Straight pods, 6 in. long with 4 or 5 beans of good quality. An improved form of Large White Lima. Pkt., .15; 1 lb., .35; 5 lbs., \$1.65; 10 lbs., \$3.30.

**Beets****Detroit Dark Red**

53 Days

Globe shaped root, dark blood red color, smooth skin. Flesh uniform in color and remains tender and of highest quality until roots are full grown. Small collar and tap root. Deservedly one of the most popular for home and market garden, shipping and canning. Pkt., .05; oz., .10; 1/4 lb., .30; 1 lb., .90.

**Crosby's Egyptian**

50 Days

Root flattened, globe shaped, with small tap root. Dark purplish red. Flesh crisp and tender. Tops medium size. A splendid variety for home and market garden.

Pkt., .05; oz., .10; 1/4 lb., .30; 1 lb., .90.

**(A) Early Wonder**

50 Days

A desirable early table beet. Flattened globe shape, medium collar, tap root and leaves. Bright red skin, vermillion red flesh zoned with lighter red. Sweet, tender. Pkt., .05; oz., .10; 1/4 lb., .30; 1 lb., .90.

**Perfected Detroit**

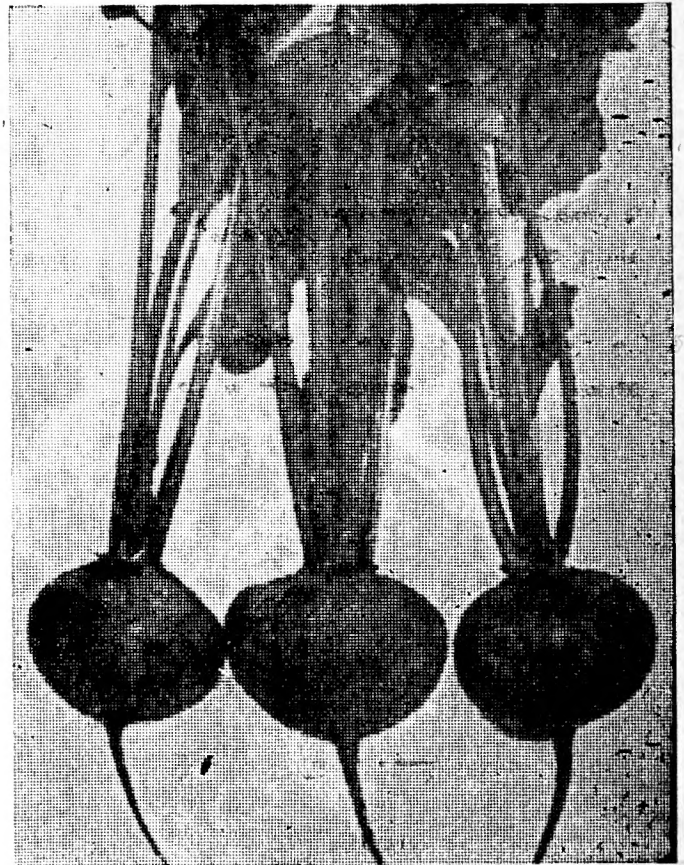
52 Days

This beet is one of the most outstanding selections of Detroit Dark Red for dark, uniform interior color. Especially adapted for canning purposes. The root is globe shape, slightly flattened at base. Interior color dark blood red, no zoning. Flesh is excellent in quality. The top is medium height, dark green leaves tinged with dark red. This variety is a good grower and heavy cropper. Pkt., .10; oz., .20; 1/4 lb., .50; 1 lb., \$1.50.

**Ansgrow Wonder**

68 Days

This excellent beet won the All-American award for 1934. We have a nice lot of selected seed of this variety, which is unsurpassed in earliness, uniformity and color. Roots are semi-globular with a small neck and tap root, zones are about the same color. This variety is very tender, sweet, and of excellent quality. Pkt., .05; oz., .15; 1/4 lb., .40; 1 lb., \$1.25.



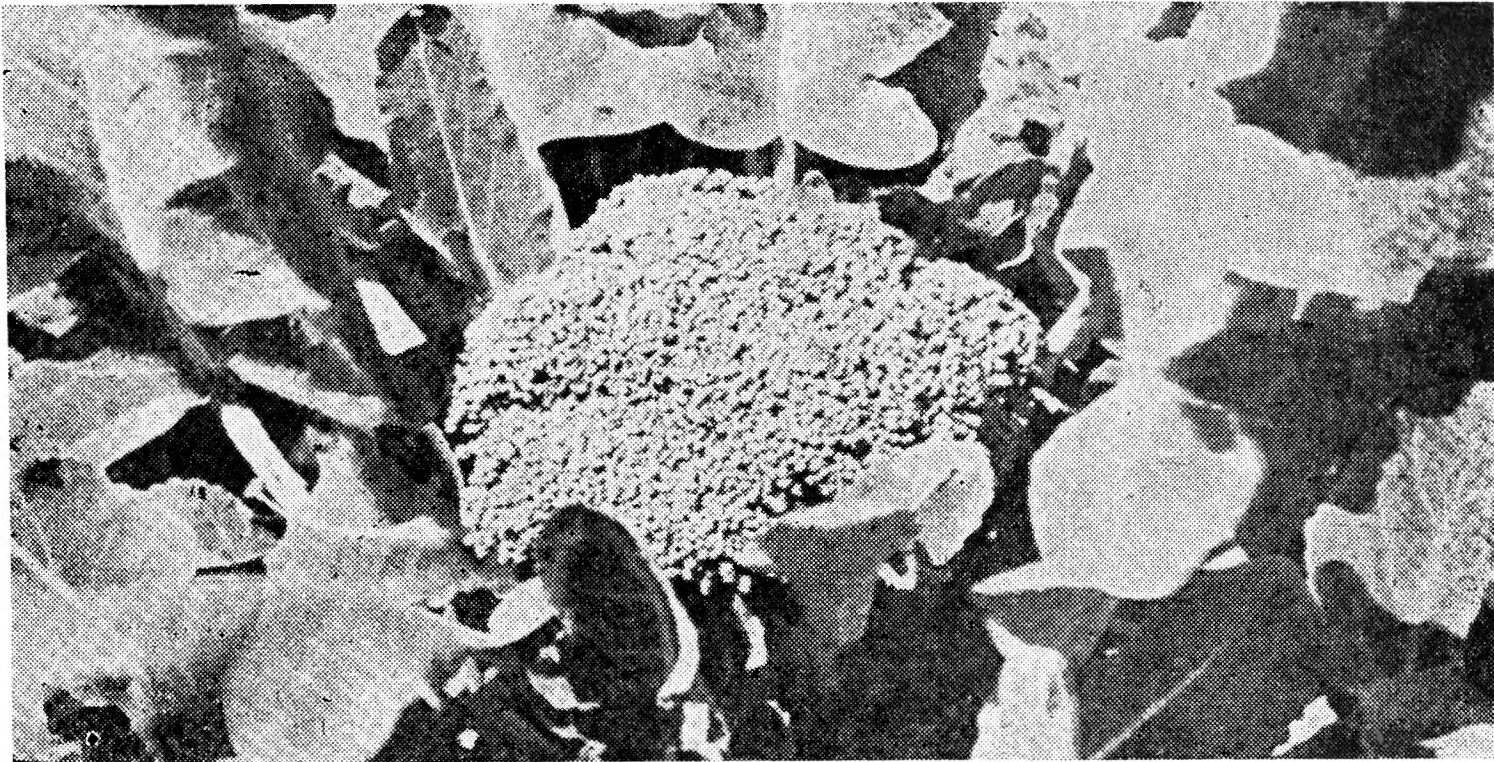
EARLY WONDER

**Beets for Stock****(A) Improved Mammoth Long Red**

110 Days

The largest and most productive mangel. Often reaches 24 to 30 in. in length, weighing from 25 to 35 lbs. Roots are uniformly straight and well formed and the flesh is white, tinged with rose. Easily harvested as roots grow one-half to two-thirds out of the ground. Oz., .10; 1/4 lb., .15; 1 lb., .45.

## Broccoli



ITALIAN GREEN SPROUTING, BROCCOLI

### (A) Italian Green Sprouting (Calabrese)

55 to 65 Days

The leading variety for shippers, also used largely by market gardeners and in home gardens. A tall branching plant forms a compact central head of bluish green flower buds resembling a loose head of cauliflower. After the main head is removed, side branches continue to develop throughout the season, and frequently form small heads, which, with the stems, are cut and served in the same way as asparagus. It is a highly desirable, delicious vegetable, steadily gaining in favor. Oz., .50.

### Extra Early Propageno

80 Days

Similar to Calabrese but grows larger heads and is much earlier. Very productive. Delicious flavor. Oz., .40.

## Brussels Sprouts

### (A) Aitken's Special—Market Gardener's Strain

This seed is grown for us from stock by the originator of this strain.

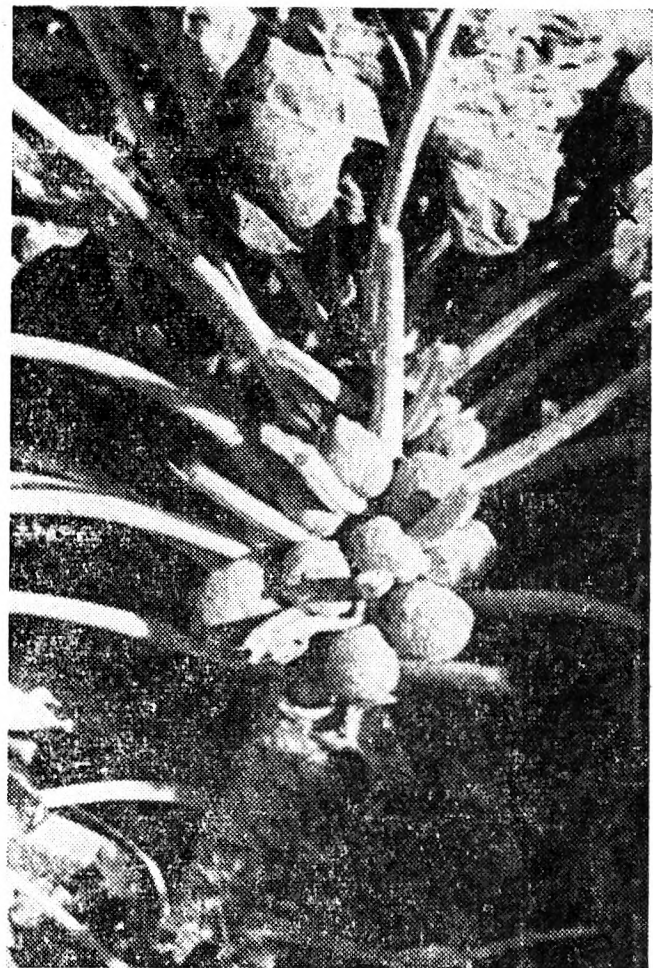
The plants are large and early, producing a large crop of Sprouts 1½ to 2 in. in diameter and are solid like stones.

This strain of Sprouts grows very smooth and brings a premium on any market. They have proven the outstanding strain amongst the Catskill and L. I. growers and in other localities where Brussels Sprouts are grown to any extent. A trial would be most convincing. Per oz., \$2.00.

### Improved Long Island

70 Days

Highly desirable for home and market garden. Plants 20 to 24 inches tall; stems thickly set, with firm cabbage-like balls of 1½ inch diameter, maturing successively. Oz., \$1.50.



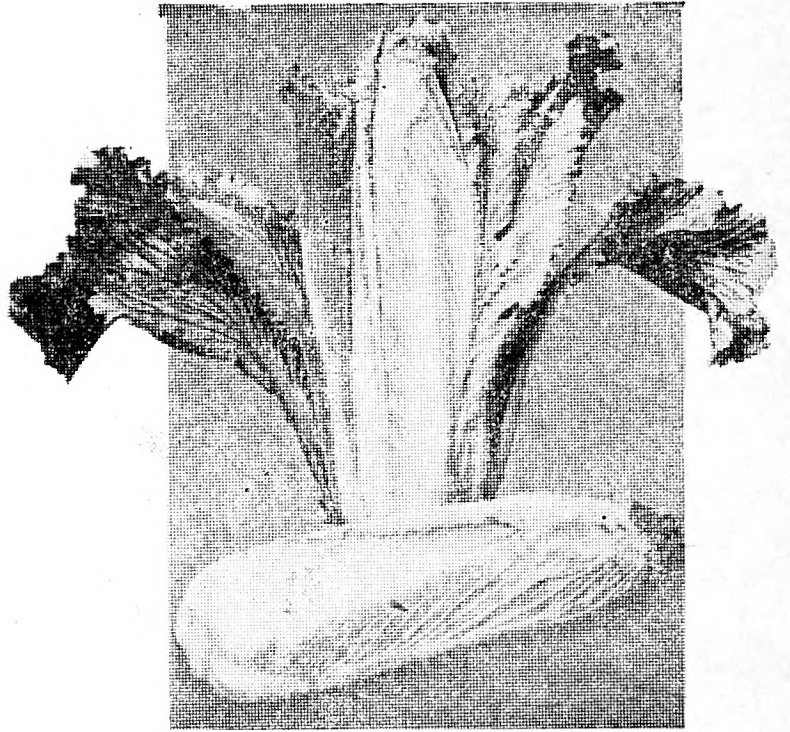
AITKEN'S SPECIAL



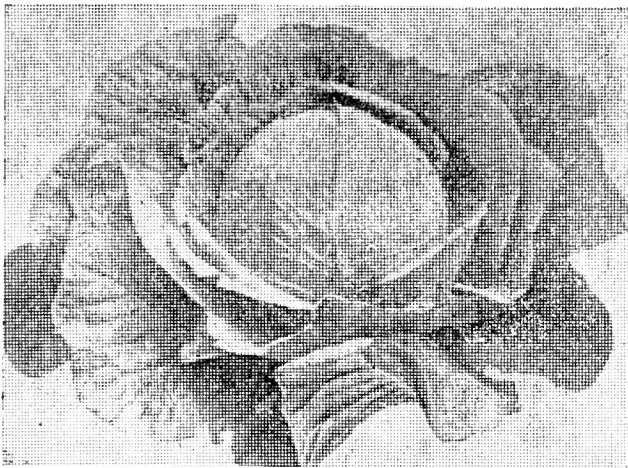
## Chinese Cabbage

### (A) Chihli

Quite a distinct early variety of great merit which we think superior to all other types. Heads are long, almost cylindrical, blanched pure white, very solid and of superior quality. The upright growth and the shape of the heads permit closer planting than of other kinds. Although of recent introduction it is already very popular on most markets. It is important to sow at the right time in July and August as Spring sowing will bolt to seed. Pkt., .15; oz., .25.



CHINESE CABBAGE CHIHILI



COPENHAGEN MARKET

## Cabbage -- Early Varieties

### Golden Acre

65 Days

An extra early cabbage producing a uniform, round, tightly folded, well balanced head of excellent quality. Heads weigh about 3 lbs., short stem. A fine variety for home and market garden. Pkt., .10; oz., .30; ¼ lb., \$1.10; 1 lb., \$3.50.

### (A) Green Acre (New)

A truly named cabbage. Resembles the Golden Acre, but the heads are larger and greener. A wonderful new early cabbage for shipping, retaining its color throughout the head, thus making it the most profitable kind to grow. Whether you grow a small garden or for market, try some this year. We believe you will find it most satisfactory. Oz., .60.



GREEN  
ACRE

### Copenhagen Market

75 Days

The finest, large, round-headed, early cabbage. It is desirable because of the uniform maturity, permitting the grower to gather and market the crop at least expense. Heads average 5 to 6 pounds each, are hard and solid with small core. The quality is extra fine and sweet. Pkt., .10; oz., .30; ¼ lb., .90; 1 lb., \$3.00.

### Glory of Enkhuisen

We list this variety as a very good second early. Similar to the large Copenhagen type. The heads are larger and mature about a week to ten days later. It is highly desirable for market and is used extensively for sauerkraut. Pkt., .10; oz., .30; ½ lb., .90; 1 lb., \$3.00.

## Cabbage -- Late

### Penn State Ballhead

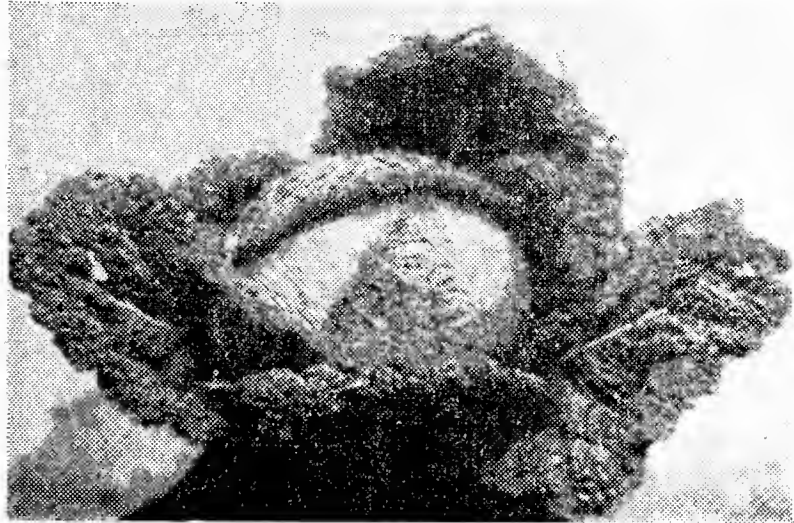
115 Days

A strain of Danish Ballhead developed by Prof. C. E. Myers at Penn State College. The selection was made for yield and uniformity. We consider it one of the best strains on the market. Heads are globe, slightly flattened on the top. They are very solid, weighing 8 to 9 lbs., and are excellent keepers. Plant is vigorous and a good grower. This variety has yielded the heaviest tonnage per acre of any Ballhead type. Pkt., .10; oz., .30; ¼ lb., \$1.00; 1 lb., \$3.20.

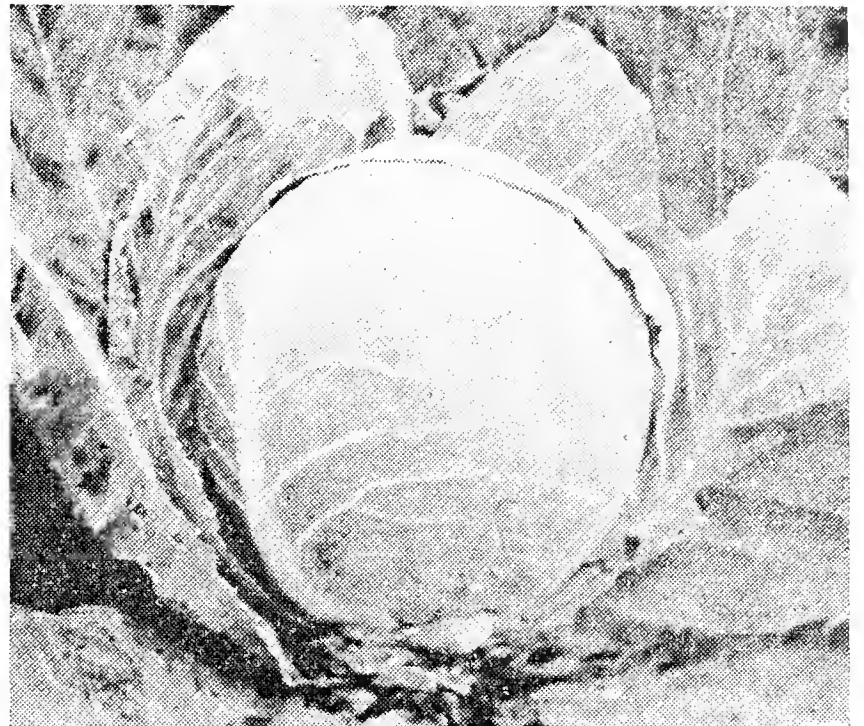


**(A) Danish Ball Head (True Stock)**

By careful selection we have succeeded in selecting this strain which we found far superior to the usual commercial stocks. The large heads are nearly round, extremely solid and more compact in growth than the standard strain. Quite distinct. We consider this selection as the best of all Ball-Head types. Pkt., .10; oz., .40; ¼ lb., \$1.30; 1 lb., \$4.25.



SAVOY, PERFECTION DRUM-HEAD



DANISH BALL-HEAD

**Savoy, Perfection Drumhead 90 Days**

The best of the Savoy type for general use; an excellent keeper. Heads nearly round, full and hard; leaves large, coarsely crimped, dark bluish green; of good quality. Pkt. .10; oz., .30; ¼ lb., .90; 1 lb., \$3.00.

**Danish Ball Head (Tall Stem) 110 Days**

This splendid variety is known to many for its storage and shipping quality. It is also widely used for Kraut. Plants are fairly large and sturdy with a stem somewhat taller than the Danish Ballhead short stem. It has very good texture and is tender and crisp with excellent flavor. Pkt., .10; ¼ lb., \$1.00; ½ lb., \$1.75; 1 lb., \$3.00.

**Cornell Early Savoy 65 Days**

This variety is widely advertised as "odorless cabbage." It matures about the same time as Copenhagen Market. The plants are medium, uniform in size, and heavily curled, slightly pointed heads weighing about two pounds each. Pkt., .10; oz., .40; ¼ lb., \$1.40; lb., \$4.80.

**Red Cabbage**

**(A) Red Acre (New)**

An Extra Early Red: fast becoming popular as a market garden strain, very early red cabbage making good solid heads about the same time as the White Copenhagen market. The heads are uniform in size, very round, solid and deep red. The plants are compact and a dependable header. Wherever it has been grown it has given full satisfaction. Pkt., .10; oz., .50; ¼ lb., \$1.50; 1 lb., \$5.00.



RED ACRE (NEW)

**Rock Red**

**95 Days**

The best, largest and surest heading red cabbage. Used mostly for pickling. The plant is large, with several spreading leaves. The head is large, round, very solid and of deep red color, averaging from 10 to 12 pounds in weight. Pkt., .10; oz., .30; ¼ lb., \$1.10; 1 lb., \$3.50.

## Cauliflower

All Cauliflower, Cabbage, Broccoli and Brussels Sprout seed should be hot water treated to prevent bacterial disease such as Black Leg and Black Rot. Practically all crucifers are affected, Cauliflower being particularly susceptible. All our seed from this family will be hot water treated before delivery unless otherwise stated.

### Super Snowball

True originator's strain, heading all at one time, producing large heavy heads with pure white and smooth curd, makes a valuable cauliflower for early planting as it most always is cut out before the later varieties begin to head. Super Snowball does best where it is planted early before hot weather sets in or late planting heading in cool weather. Pkt., .25; oz., \$2.00; ¼ lb., \$7.80; 1 lb., \$28.00.

### Early Italian Purple Cauliflower

The plants are robust and highly resistant to disease. The heads are the same shape as ordinary Cauliflower but instead of being white are purple and do not require any tying. It is very easy to grow. Purple Cauliflower with its delicate flavor and superior quality is finding an important place in the market today. Try some this year. Pkt., .15; oz., \$1.00.

### Danish White Rock or Holland Erfurt

This is another Cauliflower that has proven itself for the main crop. It is one of the best varieties and widely used both on Long Island and in the Catskills.

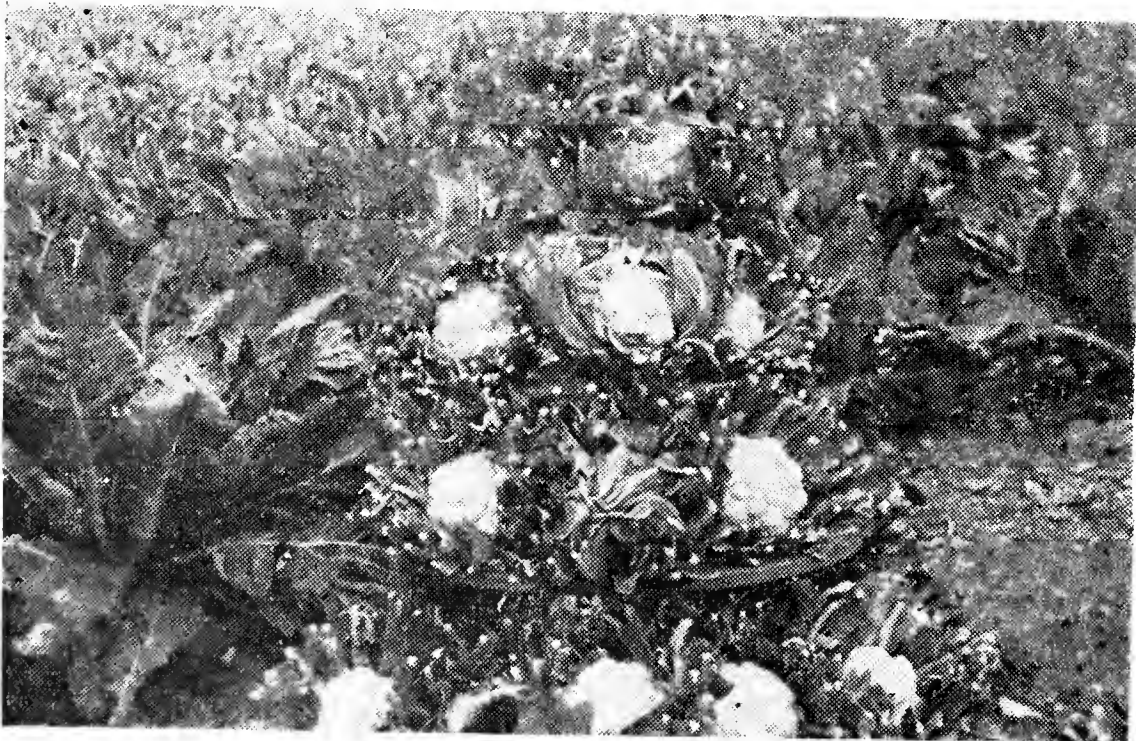
While not quite as early as some of the earlier varieties, yet sections where the growing seasons are short plants set out the 1st to the 15th of June may be cut clean before freezing weather. Pkt., .20; oz., \$1.50; ½ lb., \$12.00; 1 lb., \$22.00.

### (A) Aitken's Snowball

We recommend this superior, deep, heavy heading strain of Snowball for main crop planting. Grows heavy foliage, making large plants. We believe the heads are of the best Snowball type, large, heavy, white and of excellent curd. Matures about a week after the Improved Holland Erfurt. A trial will convince you. Oz., \$3.00.

### Improved Holland Erfurt

Selected Seed. This variety has proved to be the ideal main crop Cauliflower in most



AITKEN'S SNOWBALL

growing sections. It grows very large, heavy foliage, which covers and protects the heads more than any variety. It can be cut from the field showing the twirling inner leaves curled, completely covering the fully matured heads. This variety matures about 10 days after the Catskill Super Snowball, which makes it valuable for steady shipping, heading throughout the season, producing pure white, solid heads considerably larger than most varieties, making it very easy to pack 12 heads to the crate. Critical growers depend on the reliability of this variety for their main crop. Pkt., .25; oz., \$2.00; ¼ lb., \$7.80; 1 lb., \$28.00.

### (A) Catskill Super Snowball

The Catskill Super Snowball stands out as one of the most valuable Cauliflower for early market. The head develops into the finest of its kind, deeper, high, very firm, heavy, and snow white. Under proper growing conditions will yield practically 100 per cent grade number one heads, and can be tied up "one plant after another." This variety can be grown as an early, main or late crop. Pkt., .25; oz., \$2.50; ¼ lb., \$9.00; 1 lb., \$32.00.



### (A) Aitken's Special

This is somewhat more vigorous type of the Snowball class and selected to produce a larger head than Snowball without losing in earliness. This strain will mature with great evenness and although earlier varieties will perhaps give a few forerunners a couple of days before it makes its start, the bulk of the crop is about as early, maturing in about 60 days from time plants are set.

The pure white heads are remarkable for their great depth and unexcelled white color. The curd is of fine texture. Foliage is somewhat larger than most early varieties and the inner leaves perfectly protect the head until nearly full grown. We are sincere in believing that this strain ranks as one of the very superior stocks of Cauliflower available anywhere at any price. Pkt., .25; oz., \$3.00.



AITKEN'S SPECIAL

Mr. Mason of Delhi showing what markets paid premium prices for.

Nov. 24, 1939

Dear Sir:

I have been growing Cauliflower for the past four years and your Special was the nicest flower I ever grew. Cut better than 500 crates of fancy flower to the acre. All my Cauliflower from your Special brought premium prices on the New York Market. Kindly book me for one pound of Aitken's Special for next year. Will order my other seed later.

Yours truly,  
RICHARD MASON,  
Delhi, N. Y.



HELIOS (ORIGINAL)

A typical Helios plant ready to be tied

### Helios (Orginal)

This true variety comes direct from the breeders who have originated this strain. It is a very large, robust plant which produces an unusually large, heavy head of excellent quality, maturing about ten days later than Improved Holland Erfurt.

From all reports from our customers and trials on our own farm during 1939 weather conditions, we are convinced that Helios will come through in sections where adverse weather conditions prevail.

This variety is sold only in cans sealed by the originators of this strain, registered and protected by law for the grower.

Available only in 2-oz. and ¼-lb. sealed cans, at \$2.50 per oz.



## Celery

### (A) Wonderful or Golden Plume

A desirable sort for home and market gardens. It is free from strings and hollow stalks. Semi-dwarf plants, with thick stalks, very full heart and blanches to a beautiful golden yellow. Its attractive appearance and fine quality make it very desirable for market gardeners. Pkt., .10; oz., 50; ¼ lb., \$1.35; lb., \$5.00.

### White Plume

A truly beautiful type. Excellent for home gardens and much used by market gardeners for early market. A vigorous grower, of large size and uniform white. When growing, leaves are bright green, tipped with white. Stalks and leaves blanch to clear white. A fine variety for immediate use but not recommended for keeping. Pkt., .10; oz., .40; ¼ lb., \$1.15.

## Carrot

### Improved Danvers Half Long, Special 75 Days

A beautiful, half-long, tapering, stump-rooted carrot. Color rich dark orange. Large, smooth flesh, fine texture and very little core. Length, 6 to 8 in., diameter, 2 to 2½ in., near the crown. A good keeper. Pkt., .05; oz., .15; ¼ lb., .30; lb., \$1.00.



IMPERATOR

### Imperator

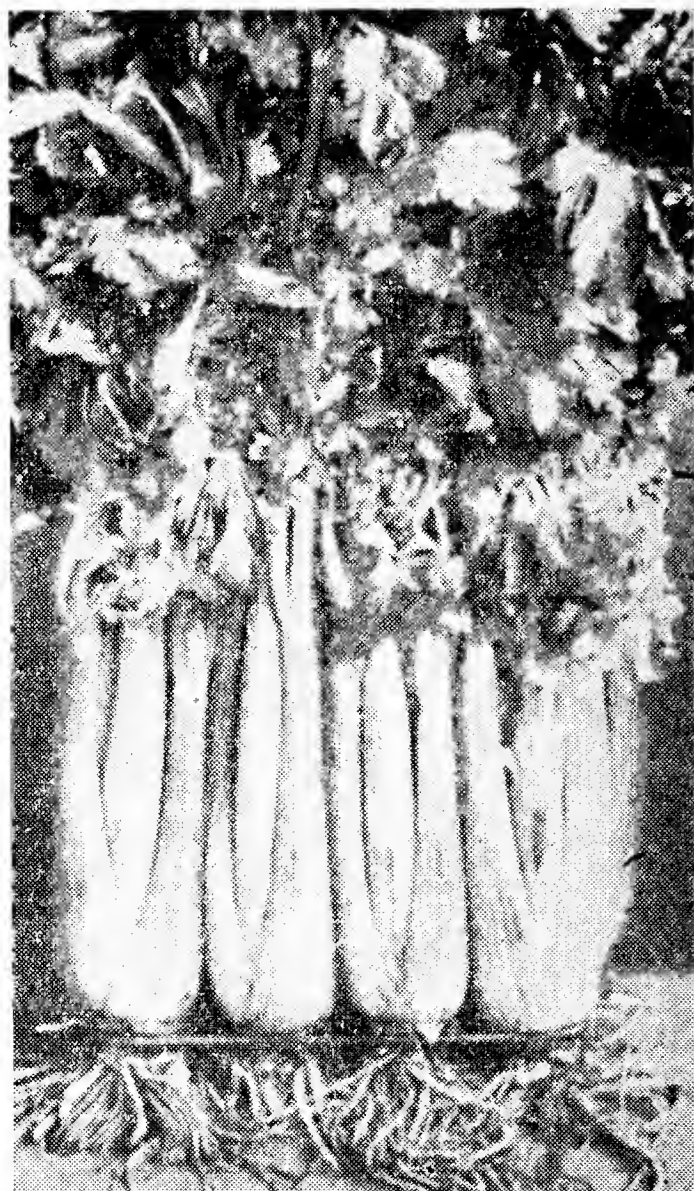
77 Days to Bunch Size

An outstanding type bred for market garden use and for shipping. Tops medium, but strong enough for good bunching. Roots have rounded shoulders, smooth, deep rich orange; uniformly tapered to a semi-blunt end. Flesh rich orange color, extending to center of root, with indistinct core; fine grained, tender and of excellent quality. Length of root, 7 to 8½ in.; diameter at shoulder, 1¾ to 2 in. Pkt., .05; oz., .15; ¼ lb., .30; lb., \$1.00.

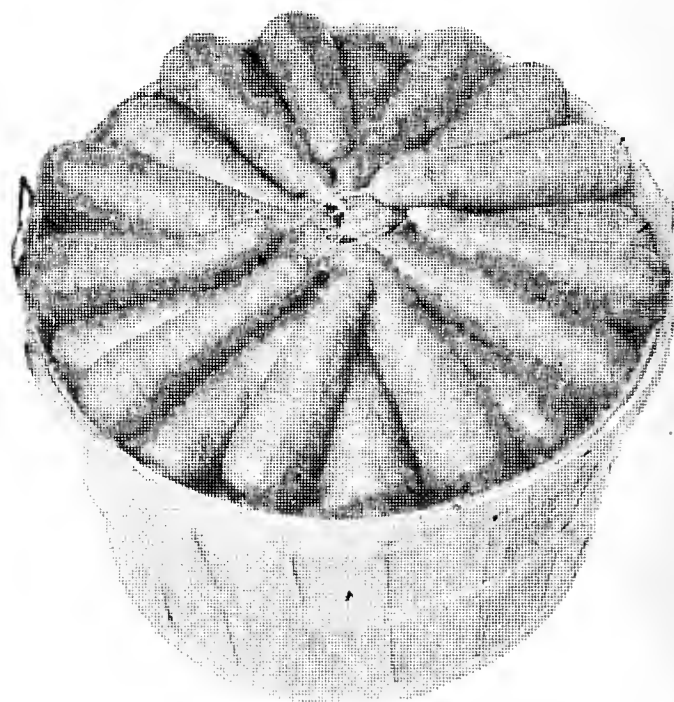
### (A) Chantenay

68 Days

An excellent table carrot, 6 in. long and 2½ in. in diameter at shoulder. Tapered, stump-rooted. Deep orange flesh. Extensively grown for winter storage and bunching. Pkt., .05; oz., .15; ¼ lb., .30; 1 lb., \$1.00.



GOLDEN PLUME



IMPROVED DANVERS

**Nantes Improved Coreless (True Stock)**

70 Days

We think this variety one of the best for table use, having a very delicate flavor. It is tender, crisp and practically coreless. Medium tops. Roots are bright orange, cylindrical. End is blunt. Roots are 6 to 7 inches long. If you want some carrots unexcelled in quality, try some this year. Pkt., .05; oz., .20; ¼ lb., .45; 1 lb., \$1.20.

**Morse's Bunching**

70 Days

A recent introduction for the market garden and shipping trade. Tops short but strong enough for bunching. Roots cylindrical with rounded shoulders and quite well stumped. Pkt., .10; oz., .20; ¼ lb., .40; lb., \$1.25.

**Hutchinson**

80 Days

The roots are 10 to 12 in. long, nearly the same size the whole length, color deep orange, tender and of good quality. Yields large crops and is used extensively for busheling. Pkt., .10; oz., .15; ¼ lb., .45; lb., \$1.50.

**Sweet Corn**

**Spanish Gold**

70 Days

Pure yellow, 12 rows, medium length ears. Ready for table two weeks earlier than Golden Bantam. Equal in earliness with Golden Gem but grows much larger plant and is more productive, being about equal to Golden Bantam in plant size and yield. Pkt., .10; 1 lb., .30; 5 lbs., \$1.40; 10 lbs., \$2.50.

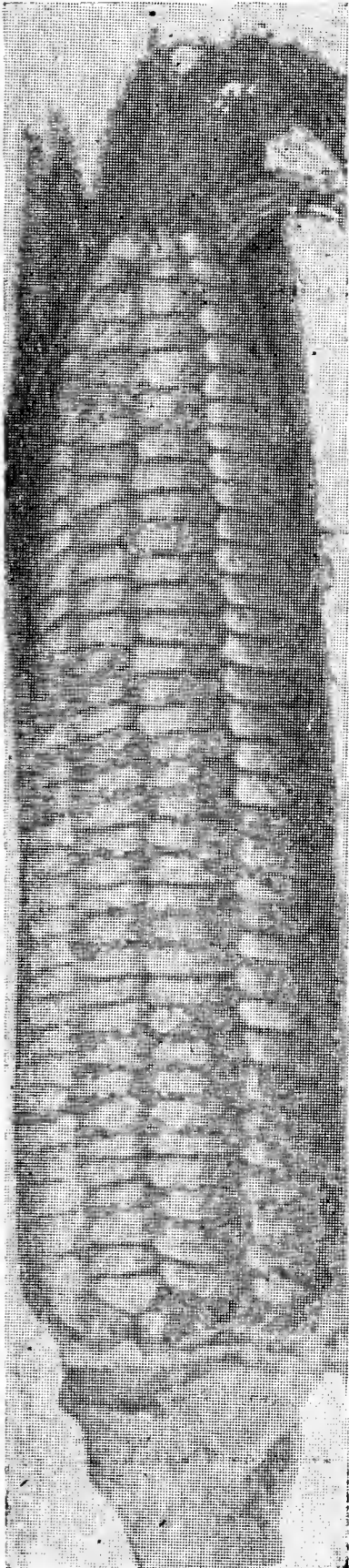
**(A) Golden Early Market 72 Days**

An excellent extra early yellow variety introduced by Gill Bros. Adapted to home garden and market garden trade. Ears are 6 to 7 in. long, mostly 12 rows of kernels, which are golden yellow, tender, sweet and of good quality. Ears are heavy in diameter, compared to length, but are attractive due to the long husk. Plants are about 5 ft., strong and thrifty, and are very productive for such an early corn. Pkt., .10; lb., .25; 5 lbs., \$1.00; 10 lbs., \$1.90.

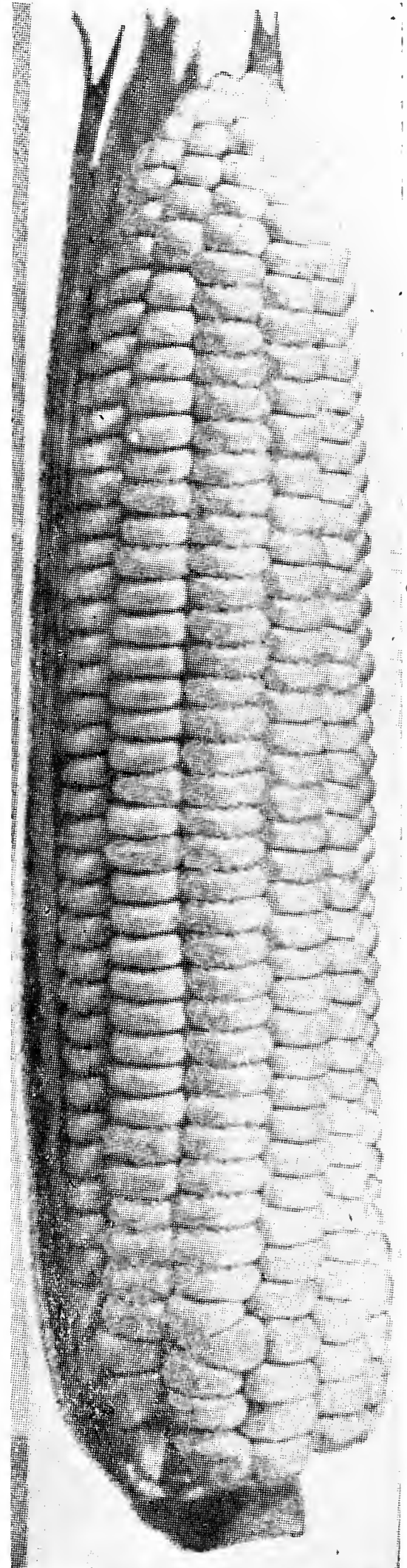
**Extra Early Golden Bantam 76 Days**

Ready to eat approximately a week before ordinary Golden Bantam. The plants grow fully as tall and the strain comes into eating stage more uniformly than regular Bantam.

The quality, color and width of kernel is quite superior. "Extra Early" Golden Bantam is adapted especially to home gardens, where early eating corn is desired. It is also profitable to market gardeners. Pkt., .10; lb., .25; 5 lbs., \$1.00; 10 lbs., \$1.90.



EXTRA EARLY GOLDEN BANTAM



WHIPPLE'S YELLOW

25 Lbs. or more of one variety sold at 100 lb. rate. Prices on request.



**(A) Whipple's Early Yellow** 84 Days

Deservedly popular as a large eared second early sort, for home and market garden. Stalk sturdy and erect; ears 12 to 14 rowed, strong husks, well filled at tips. Kernels golden yellow, fairly deep, sweet and of good flavor. Stalk, 6½ ft., ears, 7 to 7½ in. Pkt., .10; lb., .25; 5 lbs., \$1.00; 10 lbs., \$1.90.

**Whipple's Early White** 89 Days

A very vigorous, strong growing second early white variety. Recommended for home garden and market garden use. Ears 7 to 8 in., 14 to 18 rows of kernels, which are tender, sweet, and of good quality. The stalk is 6 to 7 ft., strong, vigorous. Pkt., .10; lb., .25; 5 lbs., \$1.00; 10 lbs., \$1.90.

**Improved Black Mexican** 92 Days

Many people consider this variety the sweetest and most delicious table corn grown. The ears are 8 in. long with 10 rows of kernels. At eating stage the kernels are bluish white, but when ripe they are a bluish black. Pkt., .10; lb., .30; 5 lbs., \$1.40; 10 lbs., \$2.50.

**White Early Market** 73 Days

An extremely early white variety of the same season as Golden Early Market, which is valuable for early markets. This variety of clear white corn is tender, sweet and of excellent quality. Pkt., .10; lb., .30; 5 lbs., \$1.30; 10 lbs., \$2.50.

## Hybrid Sweet Corn

Hybrid seed corn must be produced each year by crossing. Seed saved from your crop of Hybrid will not produce good results if planted.

**Spancross P39** 78 Days

Very early stock, longer and more attractive ear than the Spanish Gold parent. Highly resistant to Stewart's disease. Particularly desirable for the home garden and for first early market. Stalk medium, well tipped, 10 to 12 rows; kernels golden yellow, sweet, tender, good quality; dependable cropper. Stalk 6-6½ ft. high; ears 6½-7½ in. long.

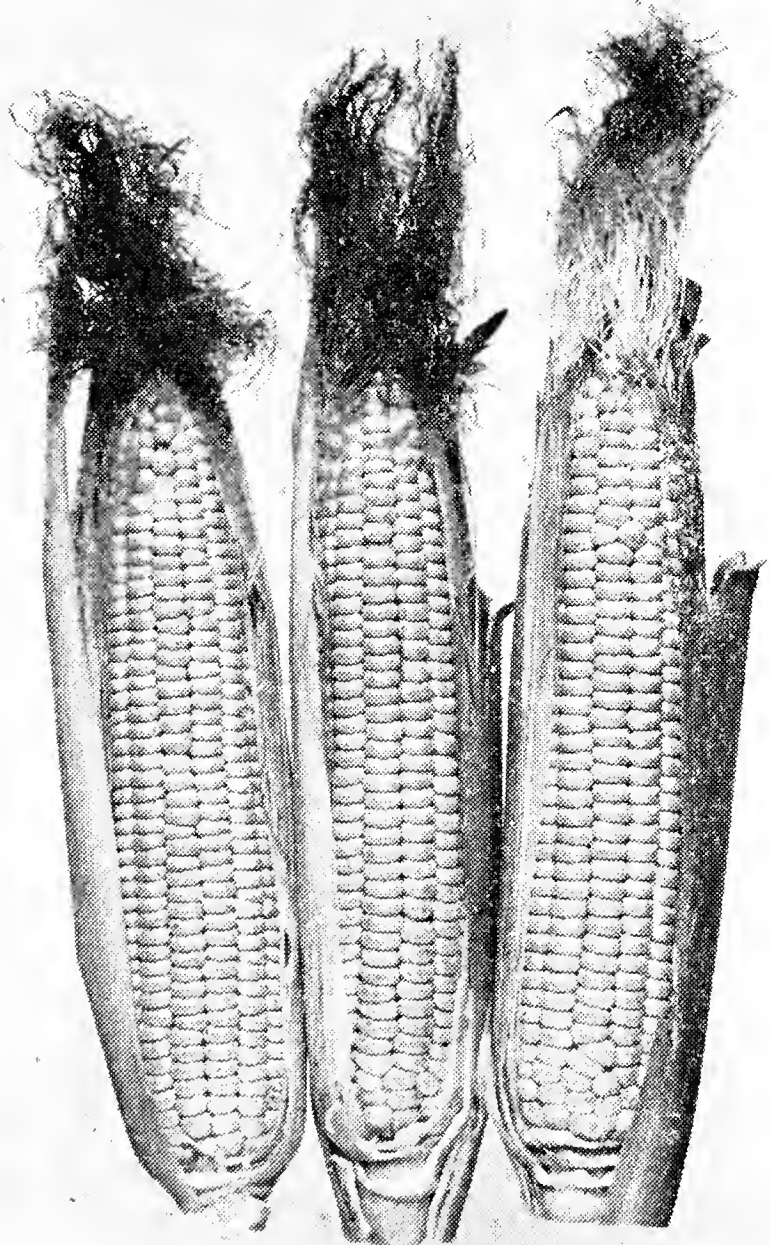
Pkt., .15; lb., .35; 5 lbs., \$1.60; 10 lbs., \$3.00.

**(A) Whipcros P39** 84 Days

This very uniform intermediate top cross was developed particularly for home and market garden use. Stalk sturdy with strong foliage; highly resistant to Stewart's disease; ears 12 to 14 rowed, well filled at tip; kernels golden yellow of medium length and good flavor. It is very prolific. Stalk, 7 ft. high; ears, 7½ in. long. Pkt., .15; lb., .35; 5 lbs., \$1.60; 10 lbs., \$3.00.

**Bancross Hybrid** 88 Days

This well-known variety matures about 10 days later than the standard Golden Bantam but with ears double the size and with deeper grains. This Hybrid is extremely uniform in plant and earing. Highly resistant to disease. Quality of the seed is excellent. Pkt., .15; lb., .35; 5 lbs., \$1.60; 10 lbs., \$3.00.



BANCROSS

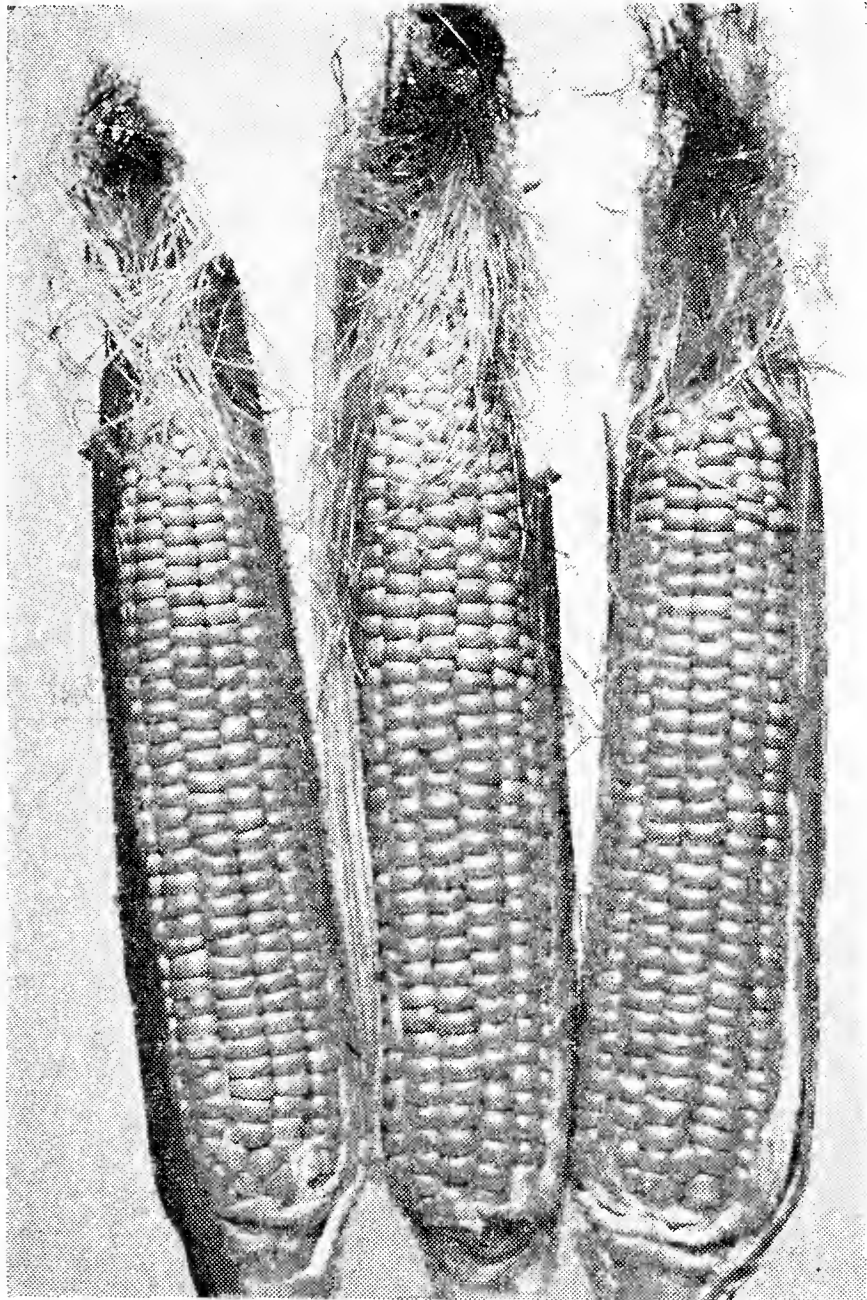
25 Lbs. or more of one variety sold at 100 lb. rate. Prices on request.



**Marcross Hybrid**

75 Days

An excellent early Hybrid produced by crossing Purdue 39 with the well-known Golden Early Market. It is similar to its parent, Golden Early Market, but larger and more uniform. Its excellent quality makes it one of the best corns for home garden and shipping. Pkt., .15; lb., .45; 5 lbs., \$2.00; 10 lbs., \$3.50.



MARCROSS

**Cucumber****A-C (New)**

68 Days

This variety has proven very popular among the large Cucumber growers. The plants grow strong and vigorous, producing a good crop of fancy grade fruits. The fruits are smooth with well rounded ends, 8 to 9 in. long,  $\frac{1}{2}$  to 2 in. in diameter. A good market and shipping variety. Oz., .25;  $\frac{1}{4}$  lb., .60; lb., \$1.75.

**(A) Longfellow, Special Strain** 72 Days

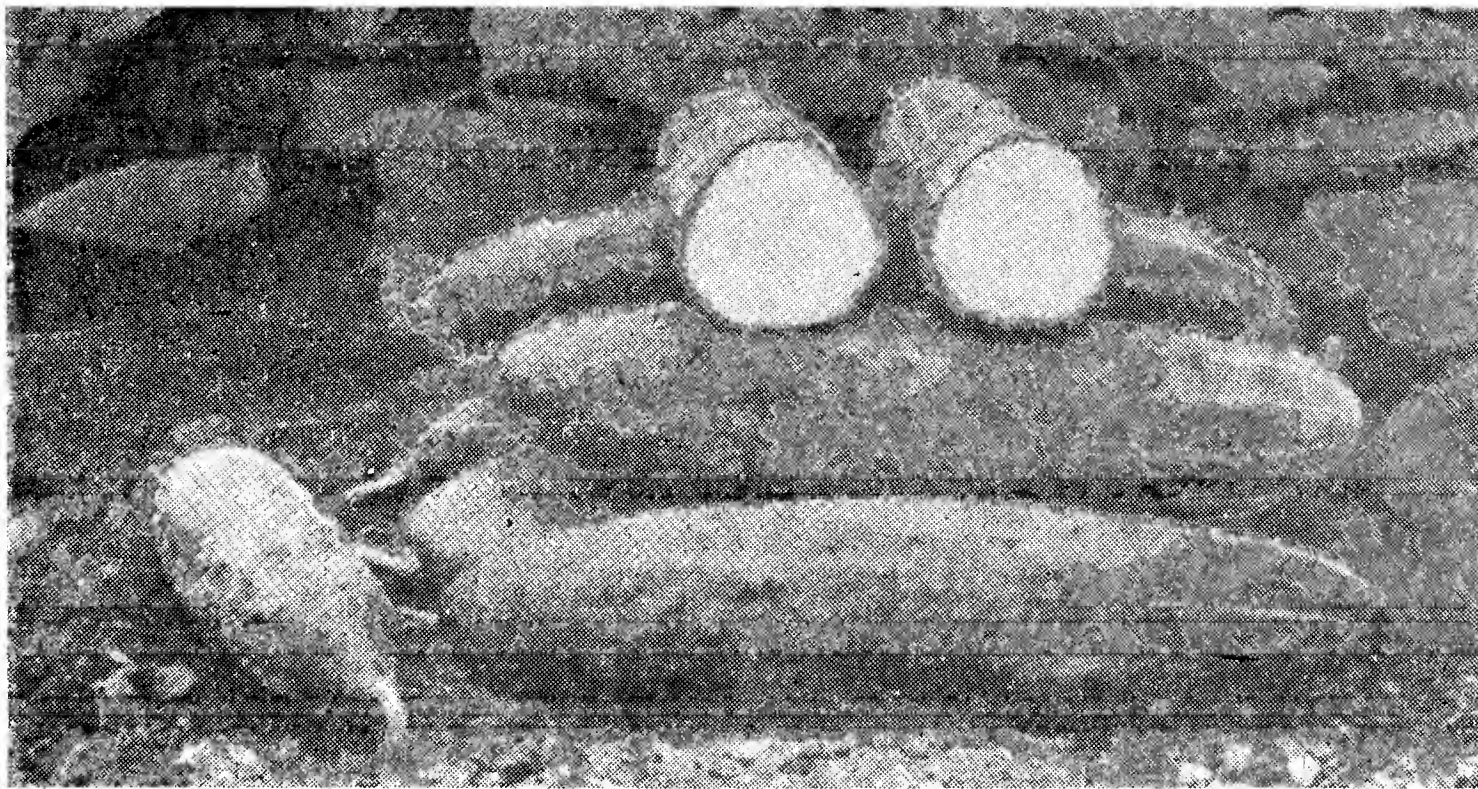
A variety suited to outdoor or greenhouse culture. Fruits 11 in. to 14 in. long, 2  $\frac{1}{2}$  in. thick. Extremely dark green over entire surface and holds its color after picking. White spined. Requires quite rich soil. Pkt., .05; oz., .20;  $\frac{1}{4}$  lb., .60; 1 lb., \$1.85.

**Straight-8**

63 Days

An excellent white spine slicing variety, was awarded the All-American Gold Medal in 1935. Desirable for shipping, market garden or home garden trade. The fruit is 8 to 9 in. long and 1  $\frac{1}{2}$  in. thick. Ends are round-

ed. It is very symmetrical, not tapering from either end. The color is dark green. Pkt., .10; oz., .25;  $\frac{1}{4}$  lb., .50; 1 lb., \$1.75.



STRAIGHT EIGHT CUCUMBER

**(A) RECOMMENDED VARIETIES**

**Early Green Cluster**

55 Days

A fine pickling variety—also desirable for early slicing. Fruits borne in twos and threes. Short (5½ in. by 2¾ in.), thick, pale green, cylindrical and full at both ends. Black spined. Pkt., .10; oz., .20; ¼ lb., .60; 1 lb., \$1.85.

**(A) Aitken's Market Special**

Matures in 65 Days

This new variety is considered one of the best for market gardeners and shippers, because of the large yield of fine, straight fruits, very dark green and stays green. The fruits are 9 to 11 in. long and not too thick, very smooth, and excellent shipper. This variety when pickled small is used extensively for dills and gherkins. If you have trouble in raising good cucumbers, try some this year; a trial will convince you. Pkt. .10; oz., .30; ¼ lb., .80; 1 lb., \$2.60.

**Boston Pickling**

57 Days

A fine cucumber for both pickling and slicing, 6 to 7 in. long, 2½ in. thick, slightly tapering, dark green, black spined. Pkt., .05; oz., .15; ¼ lb., .50; 1 lb., \$1.75.



AITKEN'S MARKET SPECIAL

**Kohl Rabi****(A) Early White Vienna**

White bulbs, tinged with green. Small leaves. Tops 8 to 10 in. long. Flesh white, of delicate flavor. A desirable sort for forcing. Eat bulbs when about 2 in. in diameter. Pkt., .10; oz., .25; ¼ lb., .60; 1 lb., \$2.00.

**Early Purple Vienna**

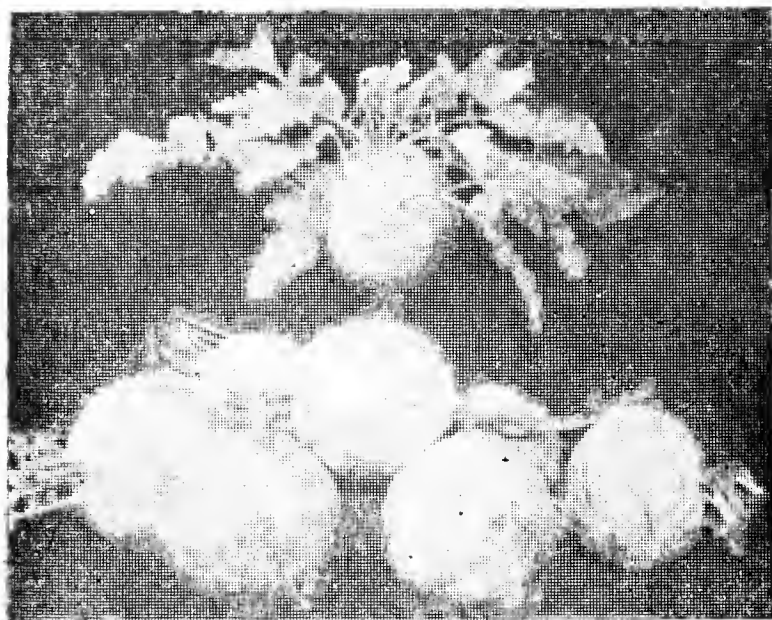
Small plants with purple-stained, dark green leaves. Flattened globe-shaped bulbs, which should be eaten when about 2 in. in diameter. Skin purple. Flesh white, mild, crisp and tender. Pkt., .10; oz., .25; ¼ lb., .60; 1 lb., \$2.00.

**Endive****Green Curled, White Ribbed**

Beautiful dark green, curly leaves are finely cut, giving the plant a feathery effect. Sturdy growth, producing circular plants often measuring 15 in. or more in diameter. Requires good rich soil. Color, rich green, blanching to creamy white. Pkt., .05; oz., .15.

**Kale or Borecole****Dwarf Green Curled**

Very hardy, productive variety of excellent flavor. Low-growing, compact plants with finely curled, deep yellowish green foliage. Pkt., .05; oz., .15; ¼ lb., .40; 1 lb., \$1.00.



KOHL RABI

**Horse Radish****New Bohemian (Maliner Kren)**

A true Bohemian Horse Radish. Sets will give vigorous growth and form large white roots. Our sets are the right size for planting. 6 for .25; 12 for .25; 200 for \$1.00. Write for special prices on larger quantities.

**Mustard****Fordhook Fancy**

Large upright growing plant, leaves exceptionally large and thick. Oz., .10; ¼ lb., .25; lb., .80.



## Lettuce -- Loose Leaf Varieties

### (A) Black Seeded Simpson 40 Days

A nationally popular variety. It is light green colored, with inner leaves almost white. Good for spring and early summer culture. Large growth, excellent quality. Pkt., .05; oz., .10; ¼ lb., .30; 1 lb., .90.

### Grand Rapids 45 Days

Black seed. One of the most popular non-heading varieties. Curled, crisp, light green leaves are especially tender and sweet when grown under glass. Early, disease resistant. Pkt., .05; oz., .10; ¼ lb., .30; 1 lb., .90.

## Heading Varieties

### (A) New York, Wonderful 80 Days

#### Los Angeles Market

A large heading variety, frequently weighing 2 to 3 lbs. Outer leaves large and crumpled. Blanched heart, creamy, crisp, tender, free from bitterness. The most popular shipping lettuce grown in this country. Pkt., .10; oz., .35; ¼ lb., \$1.25; 1 lb., \$4.00.

### Big Boston 75 Days

This variety is of the "butter head" type. A standard market garden and shipping sort. Large, round heads; tender, crisp. Few outer leaves, tinged with brown. Heart is a light golden yellow color. Pkt., .05; oz., .10; ¼ lb., .30; 1 lb., .90.

### Imperial F 83 Days

Resistant to brown blight and partially resistant to mildew. Extensively used as a summer variety in the cooler valleys of California and in mountain areas of other states; does well under varying weather conditions. Heads large, solid and attractive; an excellent shipper. Grows excellent in this section. Pkt., .15; oz., .40; ¼ lb., \$1.50; 1 lb., \$5.50.



NEW YORK WONDERFUL



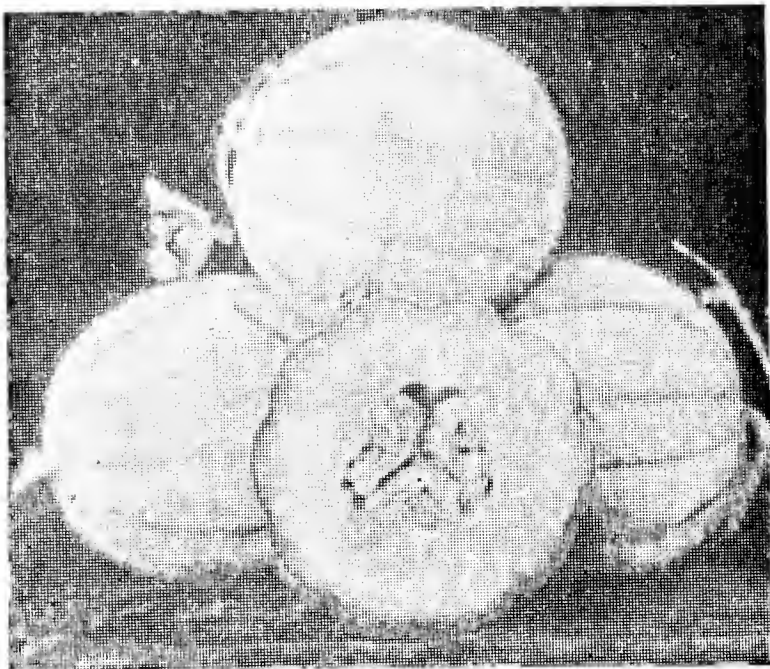
IMPERIAL F LETTUCE

### Crisp as Ice 74 days

A fine variety of head lettuce. Grows medium size head. Grows well in hot weather when other varieties will bolt to seed. Heads are well blanched and of delicate flavor. Leaves are thick and crumpled similar to the iceberg type. Outside leaves are tinged with brown. oz., .35; ¼ lb., \$1.25; 1 lb. \$4.00.

### Imperial No. 44 (New)

This new Iceberg type lettuce developed by the U. S. Dept. of Agriculture. This variety is suitable for upland soils as well as muckland. Imperial No. 44 produces a large hard head very uniform in size. Trials have proven that it has produced a good percentage of hard heads when other varieties have failed. Pkt. .15; oz., .40; ¼ lb., \$1.50; lb., \$5.50.



HEARTS OF GOLD

## Muskmelon

### Hearts of Gold

90 Days

An ideal shipper and desirable mid-season melon for home gardeners. Medium sized, vigorous, blight resistant and productive. Fruits nearly round, 5 in. in diameter, slightly ribbed, netted densely, small seed cavity. Flesh is thick, firm and of delicious flavor. Pkt., .05; oz., .15; ¼ lb., .45; 1 lb., \$1.30.

### (A) Bender's Surprise

94 Days

A large size melon weighing 8 to 10 lbs. Round shaped, slightly ribbed with coarse netting. Flesh very thick and sweet. An excellent home garden and shipping variety, growing well in almost all sections. Pkt., .10; oz., .20; ¼ lb., .40; 1 lb., \$1.25.

## Onion -- Red Variety

### Southport Red Globe

The standard red globe onion all over the country. Perfectly globe shaped, about 3 in. in diameter with small neck. Skin rich, dark, glossy red; flesh white with tinge of purple; fine grained. A good keeper and exceptionally heavy yielder. Pkt., .10; oz., .20; ¼ lb., .70; 1 lb., \$2.25.

## Onion -- Yellow Varieties

### Prizetaker

Most widely grown of the Sweet Spanish class. A mammoth yellow globe, derived from the huge Spanish Onion. A heavy producer, about 15 days earlier than the famous Southport Yellow Globe. Light straw-colored skin with pure white flesh, coarse grained but with rather mild flavor and a good keeper. Pkt., .10; oz., .20; ¼ lb., .70; 1 lb., \$2.00.

### Southport Yellow Globe

The most popular late variety, of splendid keeping quality. More oval than the Yellow Globe Danvers, much larger, more solid and heavier. Skin deep orange-yellow, flesh fine grained and fairly strong. Pkt., .10; oz., .20; ¼ lb., .70; 1 lb., \$2.00.

### (A) Sweet Spanish, Riverside Strain

A large globe shaped light yellow onion, weighing 1 to 2 lbs., and unusually mild. Small top. A better keeper than the regular strain of Spanish onions.

Pkt., .10; oz., .25; ¼ lb., .70; 1 lb., \$2.25

## Onion -- White Varieties

### Southport White Globe

The standard, producing good size bulbs, pure white in color. On account of its attractive appearance, this onion brings top prices on the markets. Flesh of delicious flavor. A fine keeper. Bulbs globe shaped. Pkt., .10; oz., .25; ¼ lb., .70; 1 lb., \$2.25.

### (A) White Portugal or American Silver Skin

A white onion used widely for sets, pickling onions, mature bulbs and bunching onions. Medium size, flat; deep, pure white bulbs with white, fine-grained flesh. Pkt., .10; oz., .20; ¼ lb., .70; 1 lb., \$2.00.

## Parsley

### Dark Moss Curled

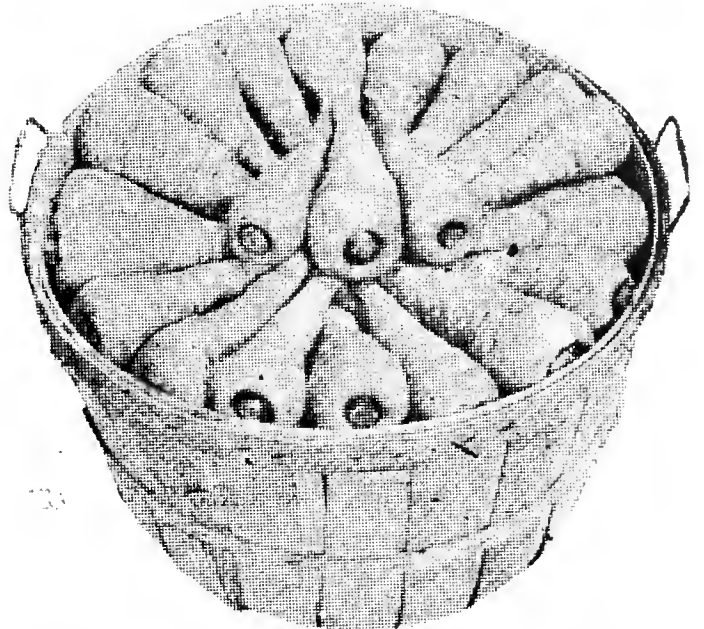
This is a vigorous growing, compact, productive sort. Leaves are very dark green in color, finely cut and so thick curled that a plant resembles a bunch of moss. A home and market garden variety, excellent for garnishing and decoration. Pkt., .05; oz., .10.



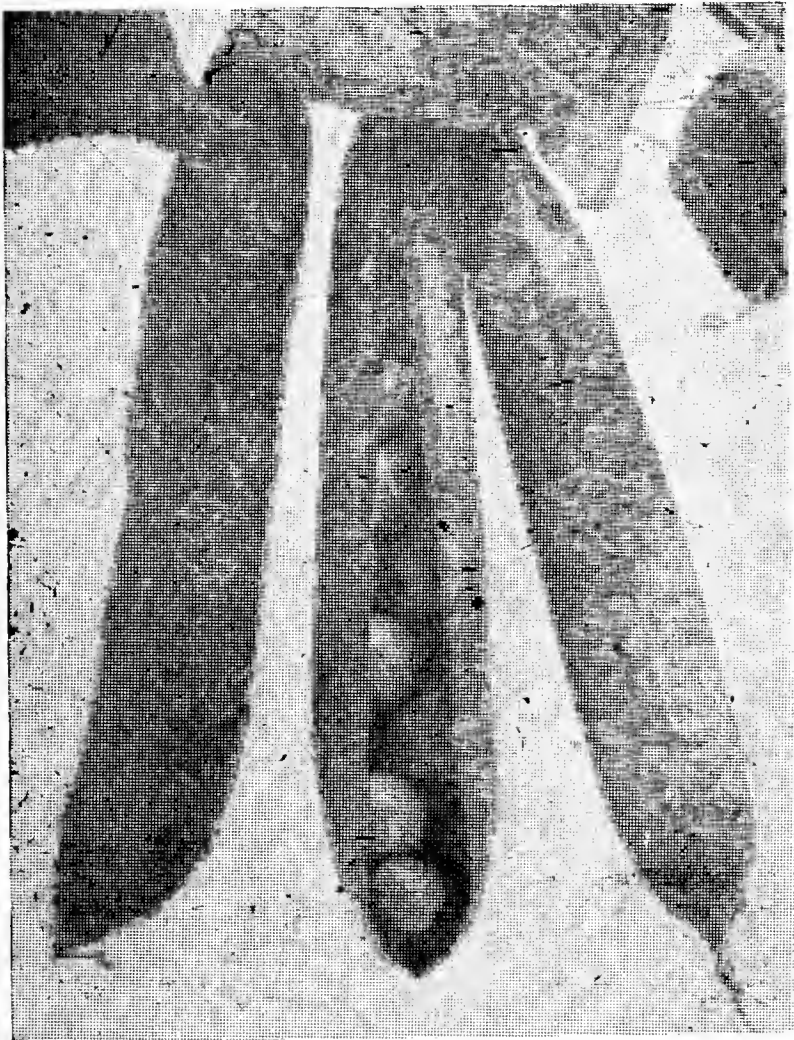
## Parsnip

### Improved Hollow Crown or Guernsey

The standard variety. Long white roots, tender, sugary. Roots 12 to 15 in. long, 3 in. thick at shoulder. Tapered and smooth. Pkt., .05; oz., .10; ¼ lb., .25; lb., .75.



IMPROVED HOLLOW CROWN  
PARSNIP



LAXTON'S PROGRESS

30 in. high. Pods light green, 2½ in. long and ½ in. wide, usually have 6 to 8 peas. Blunt pods borne singly. Widely grown for canning. Pkt., .10; 1 lb., .20; 14 lbs., \$2.25; 56 lbs., \$8.30.

### Mammoth Podded Extra Early 56 Days

An excellent early variety for both home garden and market garden trade. This variety is very productive. The pods are large, resembling Thomas Laxton. Plants grow 30 to 36 in., stems medium heavy, color of foliage is medium dark green. Pods large, about 4 in. long, blunt ended, dark green and contain 7 good sized peas. Pkt., .10; 1 lb., .25; 14 lbs., \$2.60; 56 lbs., \$8.30.

### Gradus 60 Days

A large podded, wrinkled variety for home garden and market. Vines grow 3 to 3½ ft. Pods 4 in. long and ⅞ in. wide, borne singly, with 7 to 10 rich, tender peas in each pod. Pods tapered. Pkt., .10; 1 lb., .20; 14 lbs., \$2.25; 56 lbs., \$8.30.

## Peas -- Extra Early

### (A) Progress (Laxton's) 60 Days

An excellent and the standard dwarf early variety for home gardens and shipping. May be planted almost as early as the smooth pea varieties. Vines 15 to 20 in., dark green and very prolific. Pods 4 to 4½ in. long, ⅞ in. wide, containing 8 to 10 large deep green peas. Pkt., .10; lb., .20; 14 lbs., \$2.25; 56 lbs., \$8.30.

### Alaska Earliest 56 Days

This variety and the First and Best are the earliest garden peas. Vines from 2 ft. to over



GIANT STRIDE

## Peas -- Main Crop

### Telephone, Dark Podded

74 Days

Identical with Alderman. Excellent for home and market garden, and for shipping; resistant to Fusarium wilt. Vine dark green, coarse. Pods single, broad, plump, dark green, pointed, straight. Seed large, wrinkled, light green. A standard mid-season variety of high quality. 4½ to 5½ in. pods. Pkt., .10; 1 lb., .20; 14 lbs., \$2.25; 56 lbs., \$8.30.

### (A) Giant Stride

77 Days

This is the largest podded variety of commercial importance. Especially adapted for shipping and market garden use. The plant is semi-dwarf, 26 to 28 in. tall, stem is heavy, foliage large and dark green. Pods are large, 5½ to 6½ in., ends pointed, color is dark green. Pods are wide, often crease backed. The peas are large often 8 to 10 per pod. The quality is excellent. Pkt., .10; 1 lb., .25; 14 lbs., \$2.50; 56 lbs., \$9.00.

25 lbs. or more sold at 100-lb. rate. Prices on request.

### USE GYPSUM

Many people find that after they have raised peas for a few years in their garden, the vines turn yellow and die. Ordinary Gypsum will control this trouble. Use at the rate of 1 lb. to 3 sq. yds. Broadcast over the ground just before seed is sown and rake it in. Gypsum may be bought at most dealers in building supplies.

## Pumpkin

### Winter Luxury (Orange)

A popular home garden variety that is especially good for pies. Fruits medium small, weighing about 8 lbs. Shape is nearly round, exterior color light orange, covered with a fine netting. The flesh is light yellow, very fine grained, sweet, and of good quality. Plant is running type and a good yielder. Pkt., .05; oz., .15; ¼ lb., .35; 1 lb., \$1.10.

### Early Sweet Sugar or Pie

65 Days

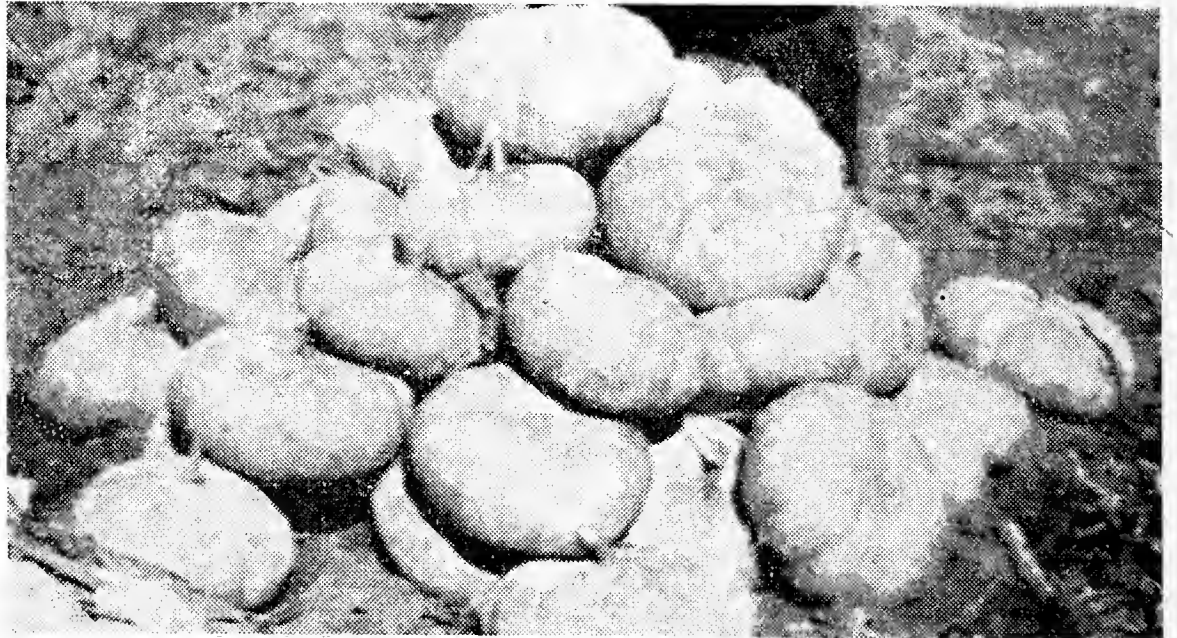
A small, early sort, extensively grown in home and market gardens. The best known pie pumpkin. Fruits 8 to 10 in. in diameter, flattened, furrowed, smooth skin. Rich orange-yellow flesh, hard rind. Can be grown with corn and is a heavy producer. Pkt., .05; oz., .10; ¼ lb., .20; 1 lb., .65.

### Connecticut Field 70 Days

A large, rich, smooth, orange-yellow pumpkin, used extensively for canning, very popular for pies and excellent for stock feed. Grown largely in corn fields. Shape slightly oval. Can be grown anywhere. Pkt., .05; oz., .10; ¼ lb., .20; 1 lb., .60.

### Large or Sweet Cheese

Excellent for pies. Shaped flat like a cheese box. Skin lemon color, no stripes, slightly ribbed. Often 15 in. across the top and 6 to 7 in. thick. Average weight 9 lbs. An excellent keeper. Pkt., .05; oz., .10; ¼ lb., .30; 1 lb., .75.



LARGE CHEESE

### LIME

Land which has long been unused or land in lawns is apt to be sour. To remedy this condition apply evenly one pound of air-slaked lime or two pounds of ground limestone to every 30 square feet. The lime should be applied and raked into a depth of two inches when the seed bed is being prepared in the spring. Instead of lime two pounds of unleached wood ashes may be used.

As an addition to soil lime is of considerable value. Besides correcting acidity it changes the physical structure of the soil. One of the elements of lime is calcium, which is required for plant growth.



## Pepper

### Ruby King

A large, sweet, early pepper, very popular with private and professional gardeners. Vigorous, upright plants producing 10 to 15 fruits to the plant. Fruits are often 6 in. long and 3 1/2 in. wide across the shoulder, slightly tapered. Usually 3 lobed. Deep green becoming a glowing ruby red when ripe. Walls thick and sturdy. Pkt., .10; oz., .35.

### Bull Nose

A standard early variety for both home gardens and market. Plants very prolific. Fruits 3 to 3 1/2 in. long and 3 in. thick, with broad end almost square. Flesh thick and sweet with mildly pungent ribs. Deep green when young and bright crimson when ripe. Pkt., .10; oz., .35.

### (A) California Wonder Improved

A recent introduction and one of the finest of the mild flavored large peppers. Fruits four lobed, when young, 4 1/2 in. long, 4 in. in diameter. Has very thick walls, the green changing to crimson when ripe. Excellent for shipping, home or market gardening. Pkt., .10; oz., .40.



## Radish

### (A) White Icicle 30 Days

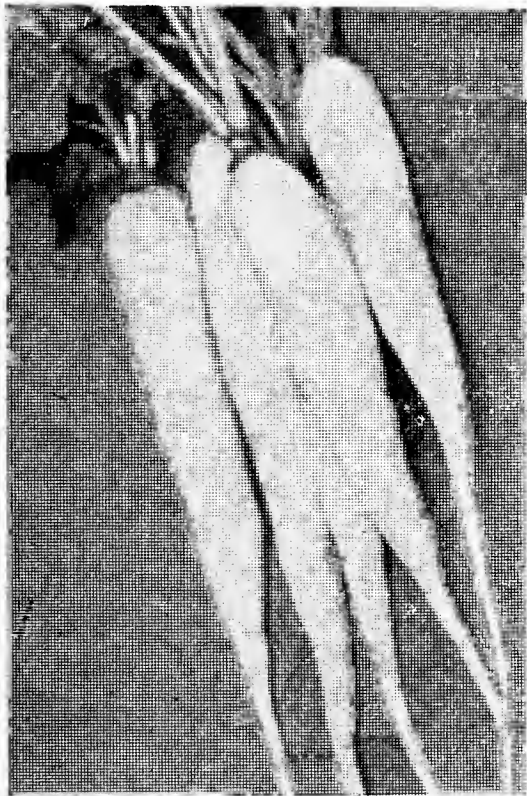
Roots 5 to 6 in. long and 1 in. thick. Pure white, with small tops. Usually marketed when about 1/2 in. in diameter. Equally suitable for outdoor planting or forcing under glass. The most popular white home garden variety. Pkt., .05; oz., .10; 1/4 lb., .20; 1 lb., .60.

### FRENCH BREAKFAST

24 Days

### French Breakfast

A standard sort for home and market gardens and for forcing. Small tops. Roots oblong and blunt, with slender tap root; about 3/4 in. in diameter and 1 1/2 in. long. Rich scarlet for 2-3 of area from top down, pure white over balance of tip end. Flesh white and crisp. Pkt., .05; oz., .15; 1/4 lb., .25; 1 lb., .70.



WHITE ICICLE

### (A) Early Scarlet Globe 24 Days

A sort which is equally valuable for outdoor planting and for forcing. Roots are of the broad-olive shape. At 3/4 in. in diameter it is at its best. Small tops. Skin bright scarlet. Flesh white and crisp. Pkt., .05; oz., .10; 1/4 lb., .20; 1 lb., .60.

### Crimson Giant 30 Days

A large growing sort, of a beautiful deep crimson color. Commonly reaches a diameter of 1 1/2 in. before becoming pithy. The flesh is white, mild in flavor, firm and crisp. Good for open ground culture or forcing. Roots spherical to slightly top shaped. Pkt., .05; oz., .15;

1/4 lb., .25; 1 lb., .70.



GOLDEN NECKLESS

## Rutabaga

### American Purple Top 100 Days

The standard variety grown for home use, market and storage. Roots large and globular, deep purplish red above ground, light yellow below. Flesh a creamy yellow, of finest texture and flavor. A good yielder and keeper. Pkt., .05; oz., .10; 1/4 lb., .30; 1 lb., .80.

### Golden Neckless, Similar to American—100 Days

Purple top; the neck is very small, and it is much earlier. Pkt., .05; oz., .10; 1/4 lb., .30; lb., .80.



FORDHOOK GIANT

## Swiss Chard

### Fordhook Giant

The leaves are dark green, heavily crumpled as in Lucullus; stem wide and thick with a good white color. The plant is strong, sturdy and a good grower. Pkt., .05; oz., .10;  $\frac{1}{4}$  lb., .25; 1 lb., .75.

**(A) Dark Green, White Ribbed** 50 to 55 Days

Leaves ready for use at about 50 to 55 days—and thereafter until frost. A popular variety for home and market garden. Grows about 24 in. tall. The leaves grow large and upright and as the outer leaves are cut more come from the center. The mid-rib or center stem of each leaf is large and almost white. After trimming it can be cooked and served like asparagus. The leaf part is cooked like spinach or turnip greens. Pkt., .05; oz., .15;  $\frac{1}{4}$  lb., .40; 1 lb., .90.

## Spinach

### Harlem Market

50 days

This is an exceptionally fine spinach and will stand a long time before bolting. It takes a few days longer to reach a marketable stage yet it's a quick spinach of fine quality. It is an excellent shipper. Pkt., .05; lb., .30; 10 lbs., \$2.75.

**(A) Bloomsdale Long Standing** 47 Days

The improved Savoy type, standing a week longer in hot weather. Oz., .05;  $\frac{1}{4}$  lb., .10; 1 lb., .25.

### Viking (New),

Early

Large Leaved

The new variety is similar to the dark green Noble. Excellent for market gardens and canning. Plant is large, spreading. Vigorous, long-standing, producing large crops. Pkt., .05; 1 lb., .25; 10 lbs., \$2.00.

**Juliana** 48 days

An excellent, second early, long-standing sort for home gardens and shipping. Leaves are round, with short stems. Very thick and crumpled leaves are dark green. Very slow in going to seed and many times will last longer than Bloomsdale Long Standing. Oz., .05;  $\frac{1}{4}$  lb., .10; lb., .25.



BLOOMSDALE LONG STANDING



## New Zealand

This variety thrives in hot, dry weather, very valuable for summer crop. The large spreading plants have small, thick, pointed, deep green leaves which can be picked repeatedly throughout the summer. Pkt., .05; lb., .40; 10 lbs., \$3.50.

## King of Denmark

45 Days

Stands longer than most sorts. Leaves large, rounded, somewhat blistered, deep green. Vigorous grower with spreading habit. Excellent for home gardens and canners. Oz., .05; ¼ lb., .10; 1 lb., .25.

## Turnip -- White Fleshed

### Extra Early White Milan

40 Days

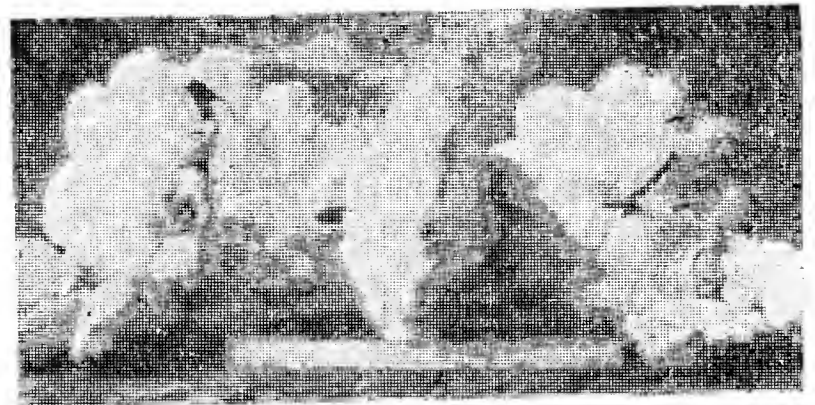
For table. An excellent white, home and market garden and forcing variety. Small strap leaved tops. Flat roots about 4 in. across. White flesh, tender and sweet. Desirable for Spring or Fall sowing. Pkt., .05; oz., .10; ¼ lb., .30; 1 lb., .70.

## Squash -- Summer Varieties

### Mammoth White Bush Scallop (Bush)

50 Days

The Bush or Patty Pan squashes are earlier than other summer varieties. This strain is an improved selection of the "Early White Bush." It is larger and deeper, has fewer scallops, and is a larger producer. In shape it is round and flat—being about 3 in. thick and 9 to 10 in. in diameter, scalloped on the edges and with warts on both sides. Color, creamy white. Eaten when young. Pkt., .05; oz., .20; ¼ lb., .50; 1 lb., \$1.50.



MAMMOTH WHITE BUSH SCALLOP

### (A) Giant Straight Neck (Bush)

A new sort, being a selection from Golden Summer Crookneck. Its superiority lies in its straightness, which permits easy packing and handling. Fruits 18 to 20 in. long when matured and heavily warted. Deep orange color. Thick and meaty. Pkt., .10; oz., .15; ¼ lb., .40; 1 lb., \$1.50.

### Giant Summer Crookneck (Bush) 55 Days

A summer sort for home, market garden and shipping. Large fruits, 18 to 24 in. long, 4½ in. through with curved neck. Skin is rich orange-yellow, warted; flesh golden yellow, tender, dry and of pleasing flavor. Pkt., .10; oz., .15; ¼ lb., .40; 1 lb., \$1.25.

### Early Prolific Straightneck

50 days

An excellent sort for summer use. Bush type very prolific. The fruit is about the same as the crookneck squash except that the neck is straight. It weighs about three lbs. It is light yellow in color at eating stage. A very good shipper and very desirable for home gardens. Pkt., .05; Oz., .20; ¼ lb., .50; 1 lb., \$1.50.

## Squash -- Winter Varieties

### Red or Golden Hubbard

110 Days

A little smaller than the Improved Hubbard and frequently a little earlier. Rind is a golden yellow and warted. Flesh is deep golden yellow, fine grained, cooks very dry and has a rich flavor. Very prolific. A favorite with canners and an excellent winter squash. Pkt., .10; oz., .20; ¼ lb., .50; 1 lb., \$1.75.

### Table Queen, Des Moines or Acorn

80 Days

An excellent table squash. The fruits are about the size of a cocoanut, and half of one, baked, serves one person amply. The shell is smooth and dark green, deeply furrowed, keeping as well as the Hubbards. Flesh is rich orange yellow, cooking as dry and sweet as a sweet potato. An enormous yielder, a few hills furnishing an ample supply for a good sized family. Oz., .10; ¼ lb., .35; 1 lb., \$1.10.

**Improved Hubbard**

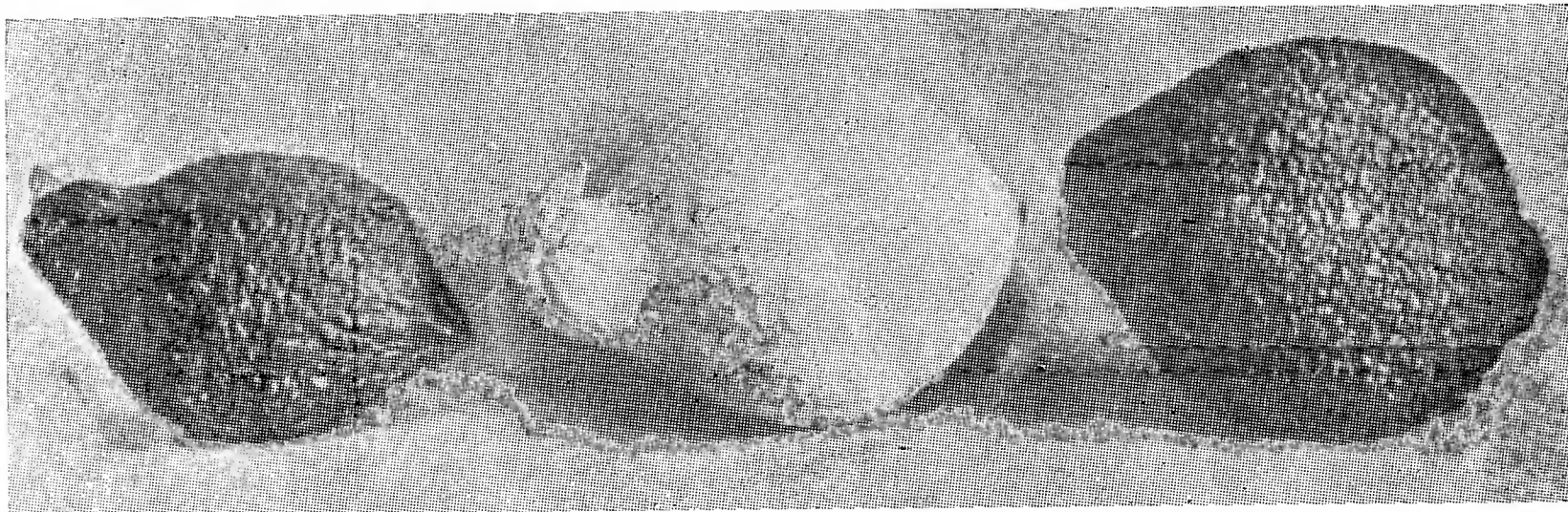
110 Days

The standard, popular squash for home gardens, market gardens and shipping. Pointed at both ends, deep green skin moderately warted. Average weight about 12 lbs. Rind very hard and strong. Flesh thick, deep orange-yellow, fine grained and dry. Oz., .10; ¼ lb., .35; 1 lb., \$1.10.

**(A) Blue Hubbard**

110 Days

The Blue Hubbard is a distinct variety resembling the True Original Hubbard in size and shape, but the color is a clear blue gray. Flesh is bright yellow, thick, fine grained, very dry and sweet. Splendid for pies. A good keeper. Pkt., .10; oz., .20; ¼ lb., .60; 1 lb., \$1.90.



GREEN HUBBARD

BLUE HUBBARD

CHICAGO WARTED HUBBARD

**Chicago Warted Hubbard**

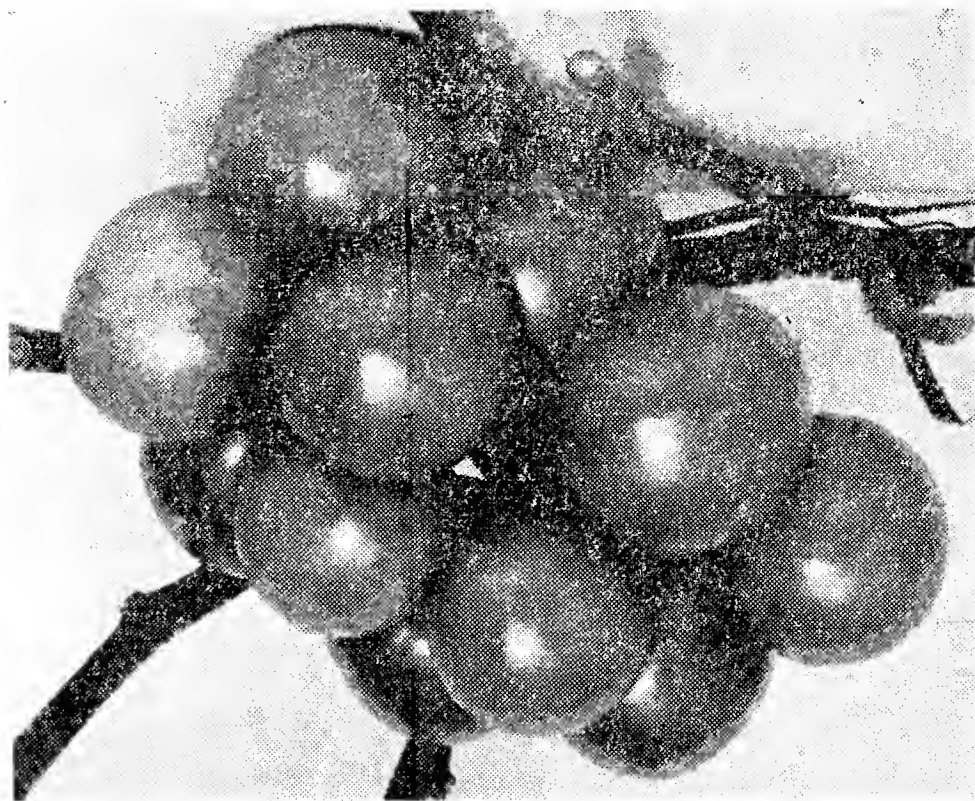
110 Days

The vines are healthy and strong, producing many large, handsome, dark green fruits, more heavily warted than the Improved Hubbard. Flesh of rich golden-yellow, fine grained and dry. Weight about 15 lbs. Oz. .10; ¼ lb., .35; 1 lb., \$1.10.

**Tomato -- Early Varieties****(A) Scarlet Dawn**

70 Days From Plant Setting

Rapidly growing in popularity. A cross of Clark's Early and Marglobe, earlier in season than either parent. Vine of medium growth, fairly open, very prolific. Fruits medium large with thick wall structure, globular, smooth, free from flat sides, bright scarlet, ripening well to the stem, exceptionally attractive. Highly desirable for home garden, shipping and early canning. Pkt., .15; oz., .75; ¼ lb., \$2.25.



SCARLET DAWN

**Bonny Best**

73 Days

Standard second early variety, valuable for market gardeners, shippers and canners. Vine medium, not very hardy. Fruits medium sized, apple-shaped, smooth, solid, bright scarlet in color, of excellent quality. Pkt., .10; oz., .50; ¼ lb., \$1.30.

**Tomato -- Main Crop Varieties****Ponderosa**

88 Days From Plant Setting

One of the largest varieties in general use for home garden planting. Very large vine; fruits very large and solid with small seed cells. Pkt., .10; oz., .50.

**(A) RECOMMENDED VARIETIES**



## Rutgers

72 Days After Plant Setting

A second early variety developed at the New Jersey Agricultural Experiment Station and introduced in 1935. A cross of Marglobe and J. T. D., desirable for market gardeners, for canning, regular pack and for juice. Plant large with thick stems and vigorous foliage. Fruits similar to Marglobe but flatter at stem end; bright red, smooth with thick walls and small seed cells; ripen from center; flesh red and firm and of low acidity. Pkt., .10; oz., .75.

## Nystate (New)

Early, Large, Heavy Cropper

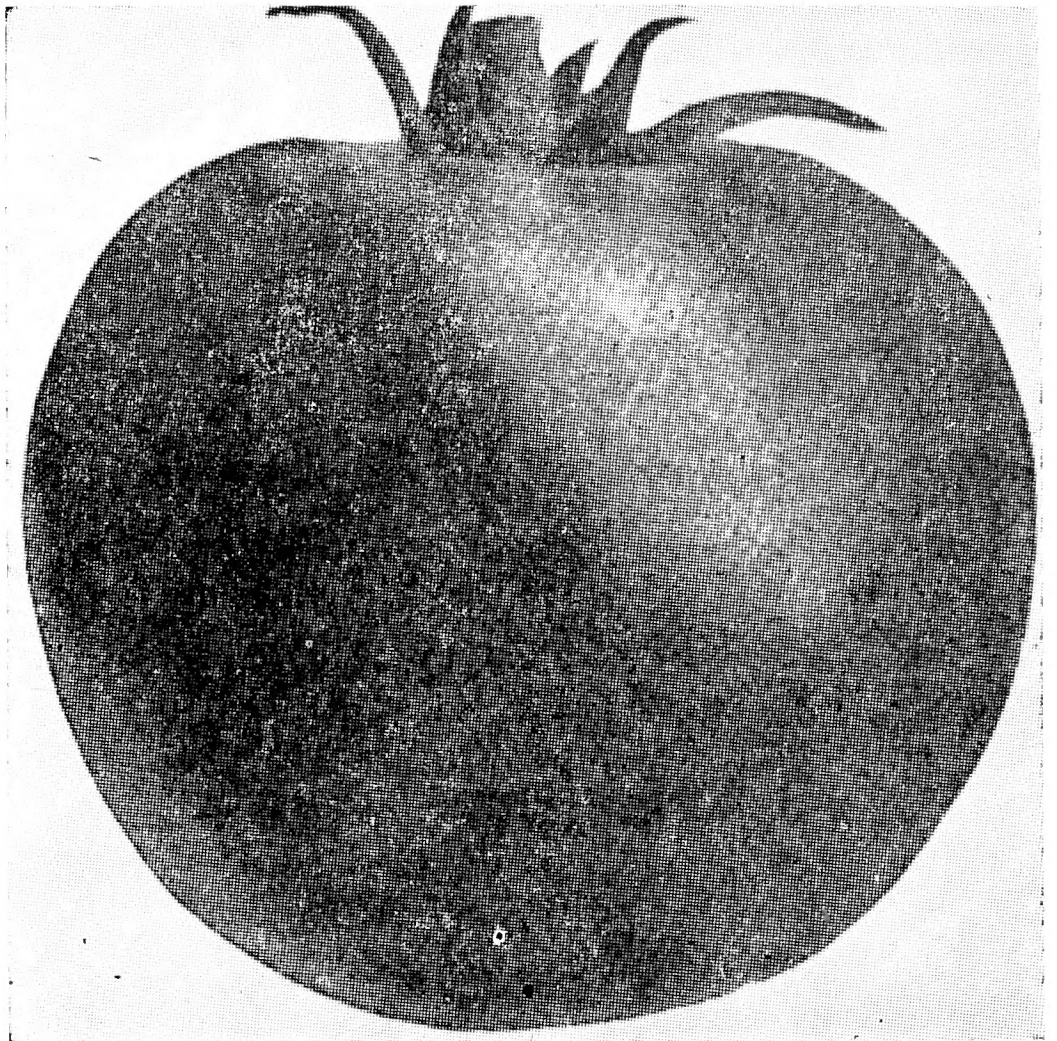
68 Days From Plant Setting

This variety introduced by New York State Agricultural Experiment Station, Geneva. An excellent second early variety for market gardeners and canning; plants are vigorous, producing large fruits, smooth, deep red and quite free from cracking, being very mild and sweet. Pkt., .10; oz., .50.

## (A) Pritchard or Scarlet Topper

73 Days From Plant Setting

A scarlet, self-topping, disease-resistant variety introduced in 1931. It is a cross between Marglobe and Cooper's Special, and has inherited fine qualities from each parent; heavily productive. Fruits large, smooth, globular, solid, with thick walls and cross-sections; color light scarlet, not as intense as could be desired. Highly valuable for market garden use, and for long distance shipping; also used for canning. Pkt., .10; oz., .50.



RUTGERS

## Yellow Ponderosa

89 Days From Plant Setting

Same as the red Ponderosa, except yellow. Pkt., .10; oz., .60.

## Marglobe

77 Days From Plant Setting

This main crop variety has come into wide use by truckers and shippers, and in some sections by canners. Plant vigorous, with heavy foliage, resistant to Fusarium wilt and nail-head rust; moderately productive. Fruits medium large, nearly globular, deep red, smooth, solid, with thick walls and cross-sections; of fine quality. Pkt., .10; oz., .50.

## Gladiolas

All bulbs listed are true to name and of first quality. Large No. 1 bulbs. This selection includes some of the best known large flowering varieties.

**Polar Ice**—Purest white, tall. Early.

**Yvonne**—Large, bluish white. Early.

**Dr. Moody**—Large, orchid, lavender. Early.

**Primrose Princess**—Large, primrose yellow.

**Mariana**—Tall, large, orange.

**Picardy**—Large, waxy, salmon pink.

**Joe Coleman**—Large, ruffled, red. Early.

**Mrs. F. Pendleton**—Bright rose pink blotch.

**Pellegrina**—Pure dark violet blue.

**Dr. Bennett**—Large, brilliant scarlet.

1 Each of the Above 10 Varieties .50

10 Each of the Above 10 Varieties, \$3.00

3 Each of the Above 10 Varieties, \$1.20

## Gladiolus (Quality Mixture)

This mixture is made up of well-balanced and popular colors. All are No. 1 large sized bulbs. 3 for .15; 12 for .50; 100 for \$3.25.

## Gladiolus (Mixed)

This mixture of well balanced colors of medium sized bulbs guaranteed to give good blooms. 5 for .20; 25 for .85; 100 for \$1.00.

**Grandiflora Mixed**

We offer this mixture of old-fashioned, sweetly scented sweet peas, of well balanced colors. Oz., .16; ½ lb., .60; lb., \$1.00.

**Spencer's, Tall Mixed**

The late flowering Spencers are vigorous growers. The vines are branching, bearing large blossoms on long, stiff stems. This mixture is of the best and newest late-flowering Spencer varieties of balanced colors. Pkt., .10; oz., .20; ¼ lb., .60; lb., \$2.00.

**Nasturtium (Dwarf)**

All Colors Mixed

A complete mixture containing all colors to be had in Nasturtiums. Free blooming plants of compact habit, about 1 ft. tall, desirable for bed and borders. Pkt., .10; oz., .20; 4 oz., .60; ½ lb., \$1.00.

**Certified Seed Potatoes**

Maine and Prince Edward Island grown. Early Rose, Early Red, Early White, Irish Cobblers, Green Mountains, Late. Prices on request.

**Field Corn****Early Hybrid Yellow Dent**

This variety is one of the heaviest yielding corns for northern states. Earliest yellow Hybrid maturing in 95 days. Tests indicate that it is the heaviest yielding corn in New York and New England states. Medium long ears. 16 straight rows of thick, sound grain. Ears placed low on a leafy, stocky stalk that will stand up well in spite of storms. Extremely deep rooted and drouth resisting. \$5.00 per bushel.

**Hybrid Sweepstakes (For Ensilage)**

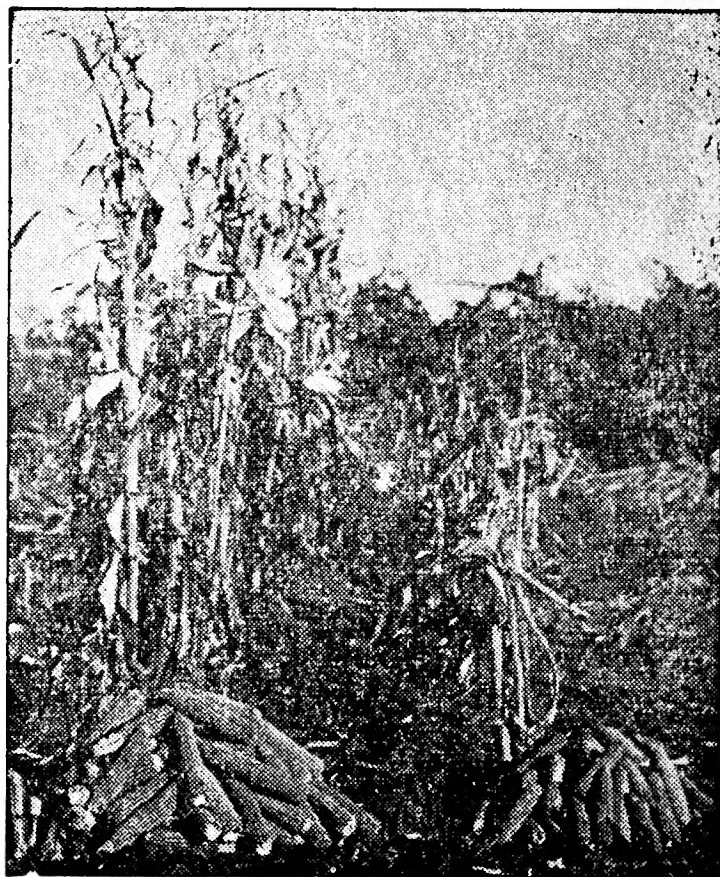
This Hybrid has proven to outyield most ensilage in tonnage. Its leaves are wider, longer, and closer together. Matures early, about the same time as Cornell 29-3, but has proven to outyield Cornell-29-3 in every test. Try some this year.

Each variety grown in the north and east for best adaptation to local conditions. Ears hand selected, heavily graded, beautiful bright colored grains.

\$4.00 per bushel.

**Prices of Field Corn**

New York Certified Cornell 29-3, per bushel	\$4.00
West Branch Sweepstakes, per bushel	2.15
Cornell 11, per bushel	2.25
Eureka Ensilage, per bushel	2.25
Yellow Sweepstakes, per bushel	2.15



EARLY HYBRID YELLOW DENT

Note: Greater yield, larger ears and height of Hybrid Yellow Dent, compared to a good commercial variety.

**Kubatox (Insecticide)**

Non-poisonous to human beings or animals. A complete insecticide known for its wide range in use. This is a vegetable preparation free from arsenic and fluorine that has been particularly successful in the control of worms on Cabbage, Cauliflower and related plants; Thrip on Onions and Gladiolus, and root maggots on Cabbage, Cauliflower, Onions and Carrots. Kubatox kills a broad range of insects on flowers as well as vegetables. 4 lb. Pkgs., .60. Also sold in larger quantities.

**Dusters**

The Improved Jumbo Plunger Duster is the sturdiest, most efficient, practical hand duster ever made. We recommend this duster for everyone with a garden, flowers, shrubs, etc. It is very economical in its use of dust, permitting covering exactly the plants desired with an absolute minimum of wastage. Adjustable to dust both the top and underside of plant foliage. Price \$2.25 each.



# Seed and Plant Tables

## Quantity of Seeds Required to Plant 1 Acre

Asparagus, 1 oz. for 500 plants . . . . .	1 lb.
Barley . . . . .	2 bu.
Beans, Dw'f, 1 qt. for 100 ft. of drill 1-1 1/2 bu.	
Beans, Pole, 1 qt. for 200 hills . . 1/2 to 3/4 bu.	
Beet, Garden, 1 oz. for 75 ft. of drill . . .	6 lbs.
Beet, Mangel, 1 oz. for 75 ft. of drill . . .	5 lbs.
Buckwheat . . . . .	1 bu.
Cabbage, 1 oz. for 3,000 plants . . . . .	1/2 lb.
Carrot, 1 oz. for 150 ft. of drill . . . 2 1/2-3 lbs.	
Cauliflower, 1 oz. for 3,000 plants . . . . .	5 oz.
Celery, 1 oz. for 4,000 plants . . . . .	4-8 oz.
Clover, Alsike or White Dutch . . . . .	8-10 lbs.
Clover, Medium Red . . . . .	10-15 lbs.
Corn, Field (Hills) . . . . .	1/4 to 1/2 bu.
Corn, Field (Drills) . . . . .	1-1 1/2 bu.
Corn, Sweet, 1 qt. for 200 hills . . . . .	8 qts.
Cucumber, 1 oz. for 50 hills . . . . .	2-3 lbs.
Fescue Chewings . . . . .	30 lbs.
Grass, Kentucky Blue . . . . .	1 1/2-2 bu.
Grass, Rye . . . . .	1-1 1/2 bu.
Grass, Mixed Lawn . . . . .	3-4 bu.
Grass, Orchard . . . . .	1 1/2-2 bu.
Lettuce, 1 oz. for 150 ft. of drill . . . . .	3 lbs.
Melon, Musk, 1 oz. for 80 hills . . . . .	3 lbs.
Melon, Water, 1 oz. for 50 hills . . . . .	4 lbs.
Millet, Golden . . . . .	3/4-1 bu.
Millet, Hungarian . . . . .	3/4-1 bu.
Millet, Japanese . . . . .	1/2 to 3/4 bu.
Oats . . . . .	2-2 1/2 bu.
Onion Seed for Sets . . . . .	30-50 lbs.
Onion Seed, 1 oz. for 200 ft. of drill . . .	5 lbs.
Onion Sets—1 qt. for 20 ft. of drill . . .	8 bu.
Parsnip, 1 oz. for 100 ft. of drill . . . . .	4 lbs.
Parsley, 1 oz. for 200 ft. of drill . . . . .	3 lbs.
Peas, Garden, 1 qt. for 60 ft. of drill . . .	2 bu.
Peas, Field . . . . .	2 1/2 bu.
Potatoes . . . . .	12 bu.
Pumpkin, 1 qt. for 200 hills . . . . .	5 lbs.
Radish, 1 oz. for 100 ft. of drill . . . . .	10 lbs.
Red Top, Unhulled . . . . .	2-3 bu.
Red Top, Recleaned . . . . .	15 lbs.
Rye . . . . .	2 bu.
Salsify, 1 oz. for 100 ft. of drill . . . . .	8 lbs.
Squash, Summer, 1 oz. for 30 hills . . . . .	2 lbs.
Squash, Winter, 1 oz. for 10 hills . . . . .	2 lbs.
Timothy . . . . .	1/4 to 1/2 bu.
Tomato, 1 oz. for 3,000 plants . . . . .	3 oz.
Tobacco, 1 oz. for 5,000 plants . . . . .	2 oz.
Turnip, 1 oz. for 200 ft. of drill . . . . .	1-3 lbs.

## Weights of Seeds

	Lbs. per Bu.
Alfalfa . . . . .	60
Barley . . . . .	48
Blue Grass . . . . .	14
Buckwheat . . . . .	48
Clover, Alsike, Crimson, Red, White . . . . .	60
Corn, Field . . . . .	56
Fescue Chewings . . . . .	24
Millet, Common . . . . .	48
Millet, Hungarian . . . . .	48
Millet, Japanese . . . . .	32
Oats . . . . .	32
Orchard Grass . . . . .	14
Peas, Canada Field . . . . .	60
Rape . . . . .	60
Red Top, Unhulled . . . . .	14
Red Top, Recleaned . . . . .	35
Rye . . . . .	56
Soy Beans . . . . .	60
Sudan Grass . . . . .	50
Timothy . . . . .	45
Vetch . . . . .	60
Wheat . . . . .	60

## Average Time Required For Garden Seeds To Germinate

	Days		Days
Beans . . . . .	7-10	Lettuce . . . . .	6-8
Beets . . . . .	7-10	Onion . . . . .	7-10
Cabbage . . . . .	4-8	Parsley . . . . .	15-21
Carrot . . . . .	12-18	Peas . . . . .	6-10
Cauliflower . . . . .	4-8	Parsnip . . . . .	10-20
Celery . . . . .	10-20	Pepper . . . . .	9-14
Corn . . . . .	5-8	Radish . . . . .	4-6
Cucumber . . . . .	6-10	Salsify . . . . .	7-12
Endive . . . . .	5-10	Tomato . . . . .	10-14
Kale . . . . .	5-7	Turnip . . . . .	4-8

## Maturity Table

Beans, table use . . . . .	50 to 65 days
Beets, table use . . . . .	60 to 70 days
Cabbages, early for cutting . . . . .	90 to 100 days
Cabbages, late for cutting . . . . .	100 to 120 days
Carrots, table use . . . . .	60 to 70 days
Celery, table use . . . . .	120 to 140 days
Sweet Corn, table use . . . . .	85 to 100 days
Cucumbers, table use . . . . .	65 to 70 days
Lettuce, table use . . . . .	40 to 50 days
Melons, table use . . . . .	85 to 100 days
Onions, for storage . . . . .	90 to 120 days
Peas, table use . . . . .	50 to 70 days
Radishes, table use . . . . .	20 to 45 days
Tomatoes, table use . . . . .	90 to 100 days
Turnips for storage . . . . .	65 to 90 days



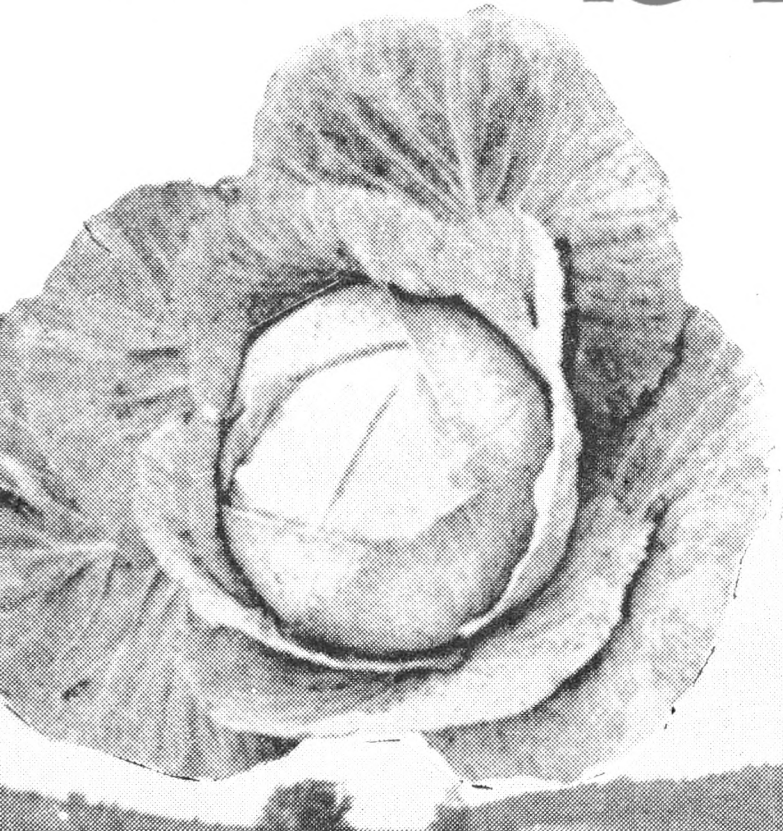
# AITKEN'S

Selected

# SEEDS

Tested

1940



DANISH BALLHEAD CABBAGE

**CHAS. R. AITKEN**  
DELHI, N. Y.